



FRIDAY FLYERS

Student Internships, Research
Experience, Professional Development,
& Other Opportunities

01/17/2025

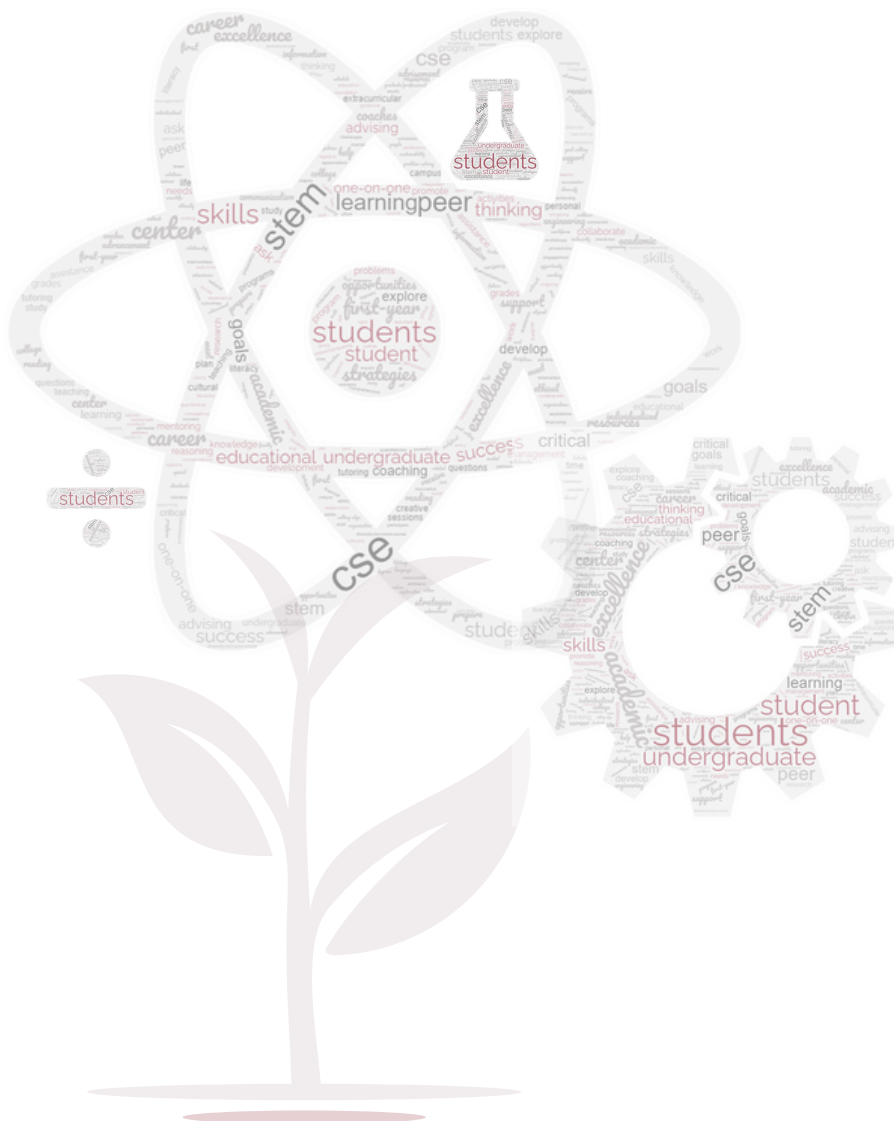
School for Agricultural and Natural Sciences
CENTER FOR STUDENT EXCELLENCE

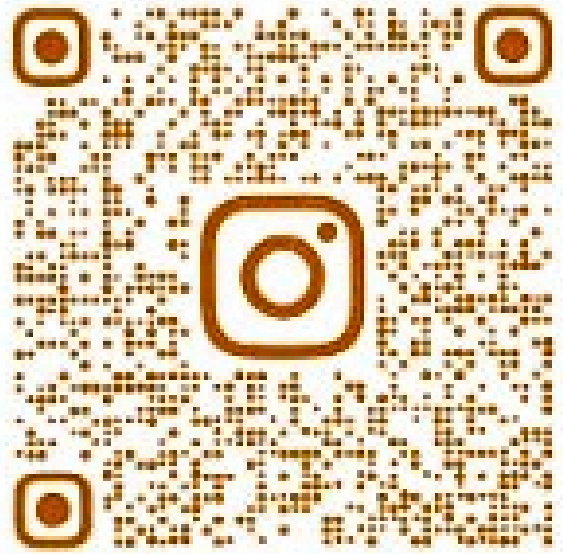
HAVE QUESTIONS? CONTACT US

School of Agricultural and Natural Sciences
CENTER *for* STUDENT EXCELLENCE

(410) 651-7101

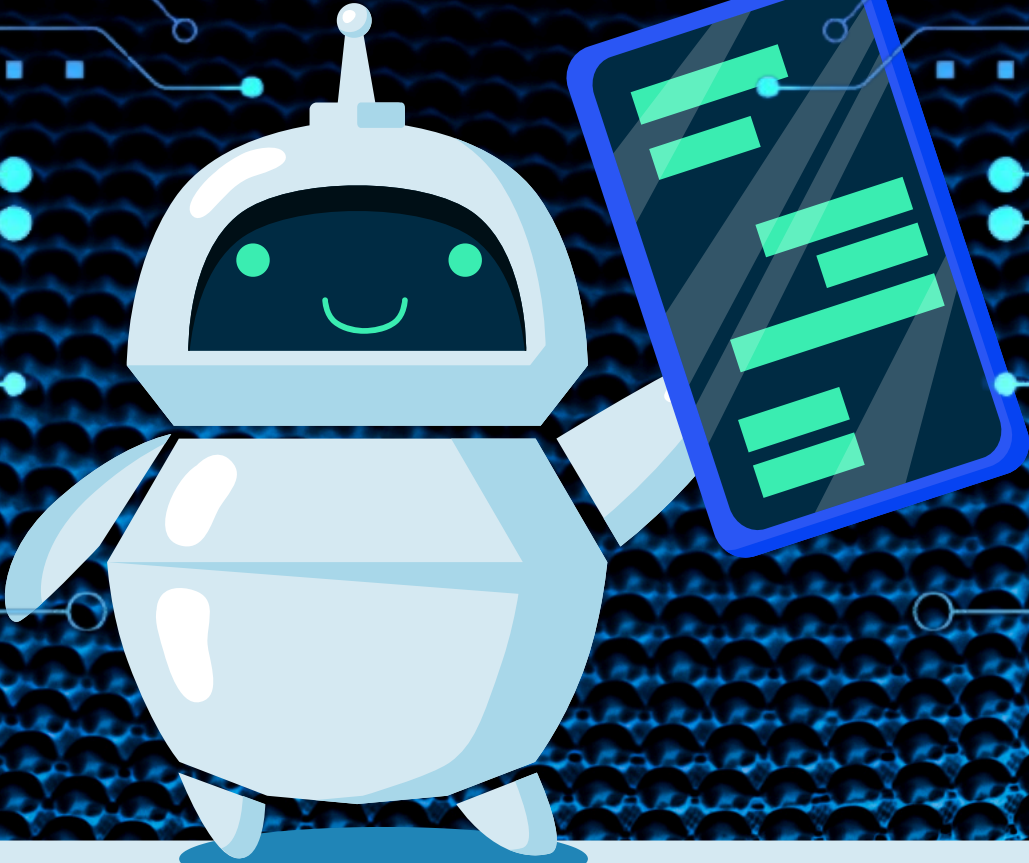
| sanscse@umes.edu





@UMES_NATSCIENCES

Official DNS TikTok and Instagram Handles.... Kindly follow and share



LET'S CHECK IN...





UNIVERSITY OF MARYLAND
EASTERN SHORE

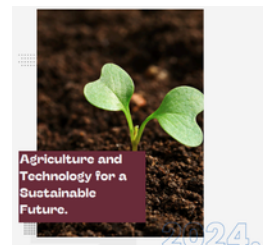


Thank you for attending the UMES-Corteva
Student-led Undergraduate Research
Symposium (SURS)

Please take a moment to share your feedback



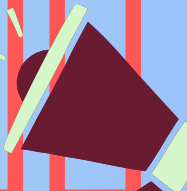
<https://forms.gle/stD5QDm3d52KzYFv9>





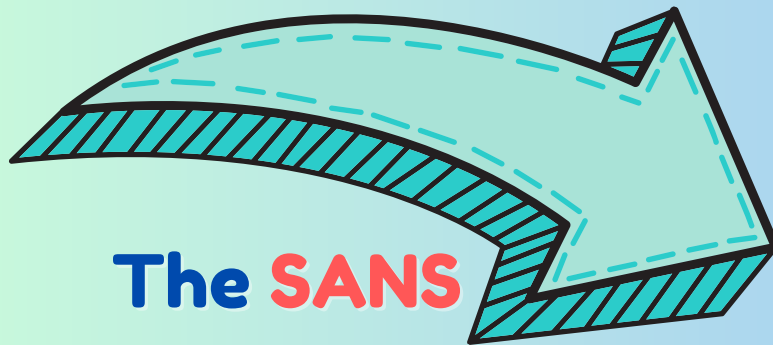
Goals Perspectives
Concerns Ideas
Projects
Initiatives

SANS STUDENT ADVISORY BOARD



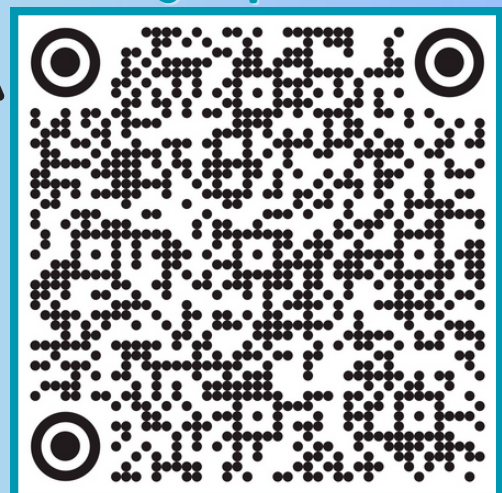
UNIVERSITY OF MARYLAND EASTERN SHORE
SCHOOL OF AGRICULTURAL AND NATURAL SCIENCES

Do you want to help
improve things at UMES
but aren't sure how?



The SANS
Student Advisory
Board would be a
good place to start.

Sign up here

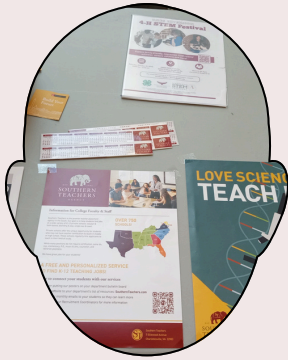


or follow this link

<https://tinyurl.com/SANS-SAB>

sanscse@umes.edu
???

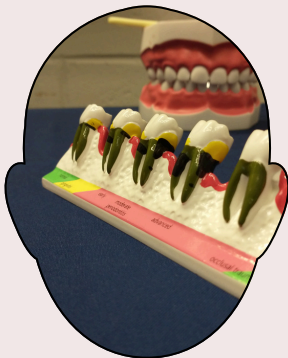
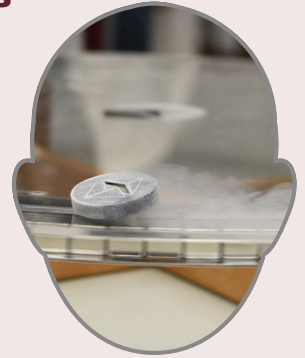
(410) 651-7101



School of Agricultural and Natural Sciences
CENTER for STUDENT EXCELLENCE

SANS-WIDE STUDENT CLUBS

TO LEARN MORE
SCAN THE QR CODE or
FOLLOW THE LINK BELOW



<https://forms.gle/KDC4tAvJPgGSqNaXA>



DEAN'S AWARD FOR STUDENT LEADERSHIP



**An Outdoor Extravaganza
for Driving Change, Innovation, and Celebrating
Student Clubs and initiatives**



**SAVE THE
DATE
04.22.25**





UNIVERSITY OF MARYLAND EASTERN SHORE

CAREER & PROFESSIONAL DEVELOPMENT CENTER
Building leaders who prepare for tomorrow.

UMES INTERN-XL

TO ALL UMES STUDENTS

What is internXL

InternXL is uniquely positioned to bring precision, diversity, inclusion, and efficiency to the internship matching process for thousands of talented and skilled young adults across the country.

These internships are in all sectors; financial, marketing, software, not-for-profits, real estate, etc.

UMES Students

Ready for the world after school? InternXL matches you with employers that fit your interests

- Paid-internship experiences and on-the-job learning
- Networking opportunities with senior-level executives
- Transferable skills for college and future endeavors

[Learn More](#)- Go to UMES InternXL for internships and more information.



zintellect

climb higher

Seeking internship, research or professional development
experience?

Find your opportunity [here](#).

How to Use This Website

Welcome to Zintellect! This website provides listings of internships, experiential learning opportunities, academic fellowships and scholarships funded by government and private sector organizations. These programs are administered by ORAU and the Oak Ridge Institute for Science and Education (ORISE). Visitors to the site may view available opportunities by selecting the Opportunity Catalog.

Applicants

Applicants may view opportunities available in Zintellect by selecting the Opportunity Catalog. Zintellect has an advanced search feature that allows applicants to view only the opportunities that fit their needs and preferences. Applicants may search by keyword, academic level, discipline, organization and program, etc.

Zintellect offers some opportunities that include ORAU employment. For more information about equal employment opportunity, click here: [Equal Employment Opportunity is the Law](#)

Mentors

Zintellect requires verification from an ORAU staff member for mentor-level application access. Once a mentor has completed the registration process, an ORAU staff member will review the information and approve access to the system. This process usually takes place within one business day of mentor registration.

From this site, mentors can search for and view details for opportunities to which they have been assigned or for opportunities open to anyone within their agency/department, review applications submitted for those opportunities, and recommend candidates.

If you have questions or need additional information, please contact us via email at Zintellect@orau.org.



Climb Higher | Zintellect.com provides listings of internships, experiential...

Welcome to Zintellect! This website provides listings of internships, experiential learning opportunities,...

 zintellect.com

Interested in a Career in Biomedical Research? Come to UC Davis!



Apply to the Graduate Group in Integrative Pathobiology (GGIP)

A Translational Program for the Health of All

GGIP Offers Graduate Students:

- A Multidisciplinary, Collaborative, Inclusive Research Environment
- M.S. or Ph.D.
- Laboratory Rotations
- Access to Professional Development
- Opportunities with School of Medicine and Veterinary Medicine (#1 Veterinary School in the country)
- We are an Anti-Racist Graduate Group with a Commitment to Diversity, Equity and Inclusion
- Excellent Mentorship from Motivated Faculty
- Designated Emphases in:
 - Biology of Vector-borne Disease
 - Biotechnology
 - Host-Microbe Interactions
 - Reproductive Biology
 - Translational Research

Applications received by December 1 will be considered for priority evaluation and several funding opportunities. We strongly recommend you apply by this date.

Applications received December 2–March 1 will only be considered if spots are available.

GRE scores are not required.

[Register Here](#)

https://ucdavis.zoom.us/meeting/register/tJYtcO-orTwiGdlirtx-BellYEUE_A0IywEO#/registration

Scholarships!

P.E.O. INTERNATIONAL PEACE SCHOLARSHIP FUND (IPS)

The P.E.O. international Peace Scholarship Fund (IPS) has been in operation since 1949. Believing that education is fundamental to global peace and understanding, members of the P.E.O. Sisterhood contribute funds for the purpose of providing scholarships for women from other countries for study in the u>S. and Canada.

An applicant will be required to complete and sign a document promising to return to her home country or to a location outside the U.S. or Canada within sixty (60) days, depending on her visa status, upon completion of her degree program(s) or Optional Practical Training (OPT)

An applicant must be qualified for admission to full-time graduate study, working toward a graduate degree at an accredited college or university in the U.S. or Canada. A copy of the applicant's confirmation of admission must be submitted with the application. This notice must specify the graduate degree program.

In order to qualify for her first scholarship, an applicant must have a full year of course work remaining and be enrolled and in residence for the entire year.

The maximum scholarship amount for one (1) year (12) months of study is \$12,500, based upon need. Lesser amounts may be awarded according to individual needs.

Applications will be electronically accepted in the IPS office only between September 15 and December 15.

Empowering Future Leaders Through STIPDG

DOT – The Federal Highway Administration (FHWA) – Summer Internship
Opportunities in Transportation for Diverse Students (STIPDG)



STIPDG is a federally funded program by the U.S. Department of
Transportation – FHWA. The program is Administrated and operated by
GMG Management Consulting Inc.

Paid Summer Research, Graduate Fellowships, and Graduate programs!

For Undergraduates

Paid Summer 2025 Undergraduate Research Placements:

Over 700+ programs – NSF REU, NASA, NIH and other paid summer research opportunities for undergrads



For Financial Support in Graduate School

Fellowships and graduate programs in a wide variety of STEM disciplines



For tips on Applying and Associated Resources



www.pathwaystoscience.org

Education and career training opportunities in Science, Technology, Engineering & Mathematics (STEM)

SEARCH for a program . . . find your future!



4EC: Ecology, Evolution, Equity, and Environmental Change REU

University of California–Davis

Dec 2024 – Feb 2025

Award Title

REU Site: Ecology, Evolution, and Equity in Environmental Change (4EC)

Overview

The **Ecology, Evolution, Equity, and Environmental Change (4EC) REU** provides undergraduates with research experience in ecology and evolutionary biology, discussion of environmental justice and its implications for research in environmental biology, professional development, and mentoring. We seek to support the critical transition from undergraduate to scientist, and thus to prepare students for graduate study or for fruitful careers in environmental biology.

Eligibility Requirements

Requirements:

1. U.S. citizens, U.S. nationals, or permanent residents of the United States
2. Current community college students; or students at 4-year institutions who are sophomores, juniors, or seniors with at least one term of undergraduate study after REU completion
3. Community college students must complete at least one course in general biology prior to the start of the REU
4. Students at 4-year institutions must complete general biology and at least one course in ecology, evolution, animal behavior, or environmental science prior to the start of the REU

Website

<https://ecoevoreu.ucdavis.edu/>

Locations

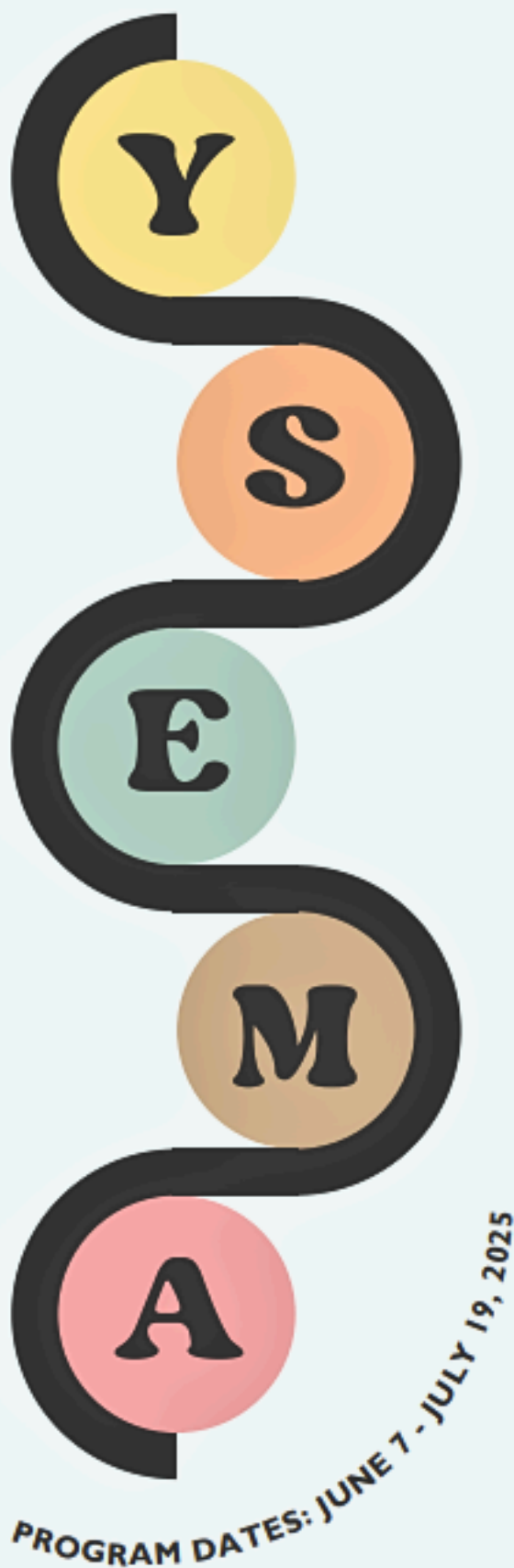
**University of
California–Davis**
DAVIS, CA

One Shields Avenue
DAVIS, CA 95616
USA

Yale Summer Enrichment Medical Academy 2025

YSEMA is a **free, residential** summer academy for undergraduate students (current freshmen or sophomores) that are interested in pursuing medical school.

Qualified applicants must have a minimum GPA of 2.5 and attend a Historically Black College and University (HBCU), Hispanic- Serving Institution (HSI) or Connecticut Community Colleges.



YSEMA CURRICULUM

- Intensive Course load:
 - Introduction to Biology
 - Introduction to Research
 - Organic Chemistry
 - Writing & Communication
- Professional Development
- Clinical Experience

PROGRAM BENEFITS

- \$1,000 stipend
- Daily meal voucher provided
- Housing provided on YSM campus
- Travel funds provided

APPLICATION DATES

- Opens on: November 18, 2024
- Closes on: February 2, 2025

INFO SESSIONS

- Virtual information sessions via Zoom on:
 - November 14, 2024 at 6pm EST
 - January 21, 2025 at 6pm EST
- Zoom link for both sessions:
 - yale.zoom.us/j/6962781344?omn=94340316983&from=addon

CONTACT INFO

- Website:
 - medicine.yale.edu/dice
- Email:
 - dice@yale.edu





HEY HAWKS, YOU'RE INVITED!

SAVE THE DATE!

..... *2025 Spring Opening*
Session

JAN. 22 | **8:30 AM - 12 PM**

CONTINENTAL BREAKFAST & LUNCH PROVIDED

+ VIRTUAL PROFESSIONAL
TRAININGS IN THE AFTERNOON

MORE DETAILS TO COME...

USDA 1890 National Scholars Program Informational Webinar Series



**Applications Accepted
January 7 - March 1, 2025**

The USDA Office of Partnerships and Public Engagement (OPPE) will host three webinars to present information and answer questions about the [1890 National Scholars Program](#). USDA liaisons will present information about the program, eligibility, fields of study and the selection process. The second portion of the webinar will be Q&A.

WEBINAR DATES and TIMES:

January 22, 2025 @ 6:00 PM Eastern [Time Register Here](#)

January 29, 2025 @ 1:00 PM Eastern [Time Register Here](#)

February 19, 2025 @ 6:00 PM Eastern [Time Register Here](#)

**Learn more and apply online at [USDA 1890 National Scholars Program](#).
For more information, contact partnerships@usda.gov.**

Pathways to Open Science

Hosted by Openscapes, Black in Marine Science, and Black Women in Ecology, Evolution, and Marine Science

Pathways to Open Science is a remote event series for Black environmental & marine researchers to build community for the future of data intensive science. Hosted by Openscapes, Black in Marine Science (BIMS), and Black Women in Ecology, Evolution, and Marine Science (BWEEMS), we aim to empower researchers with skills like data organization and resources to conduct more efficient and collaborative science. If you'd like to rethink your folders full of files with names like "analysis_final_v5.xlsx" and enjoy connecting with others, we welcome you to join us!

Pathways Event Outline

This 6-part remote event series runs on Thursdays
(January 23rd - February 27th, 5:00 PM- 6:30 PM EST)

3 community calls - 1.5 hour meetings with facilitated discussion, mini-lectures and community conversations:

January 23rd What is Open Science Anyway?

Learn all about open science and data organization skills that will save you time and energy!

February 6th Building Our Skills for a Better Tomorrow

Hear from experts about building community and your data science toolkit for more efficient research!

February 20th Data Science is for US

Join the conversation! Hear all about our journeys into data science and building community for innovation.

3 coworking sessions - 1.5 hour calls structured for you to bring your own work, practice skill building, screenshare, and ask questions

- January 30th
- February 13th
- February 27th

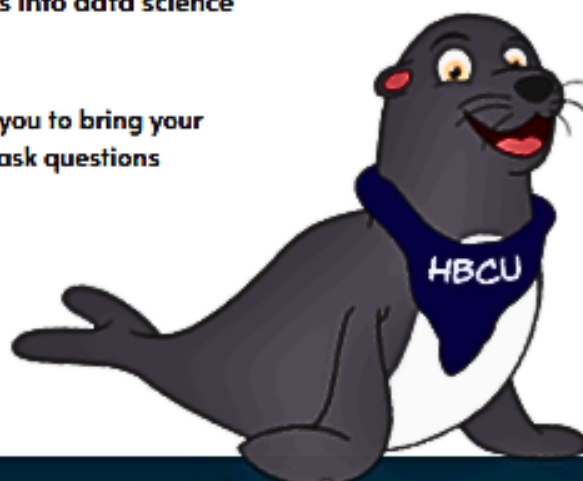
Hear speakers' stories, learn efficiency tips, develop new data science skills, and more!

Why Participate?

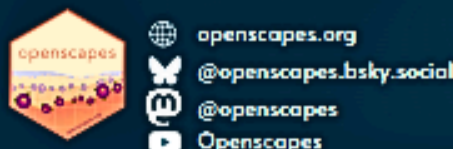
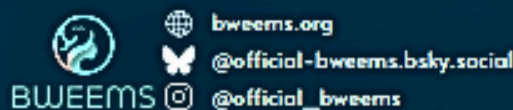
- ★ Build data science literacy and skills
- ★ Encourage community building
- ★ Amazing skill development to add to your resume
- ★ Great networking opportunity
- ★ It's free!

No coding experience required!

Registration is now open! Scan our QR code for more details.



Connect with us!





Hopkins Undergraduate Summer
Training and Research Program

HOPKINS USTAR Program 2025



About Us

The Hopkins USTAR Program is a two-summer, mentor-guided research training experience for undergraduate students who are in Medicine, Science, Technology, Engineering, and Mathematics (MSTEM) fields to engage in aging research, including Alzheimer's Disease and related dementias (ADRD).



Mentorship

Gain experience by working with a faculty mentor on a research project



Professional Development

Network with researchers and students from across the US



Housing & Financial Support

We will provide \$5,000 in earnings and on-campus housing

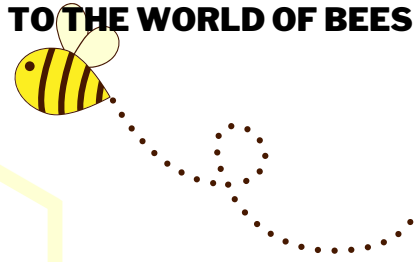


Visit Our Website
www.johnshopkinsustar.com
Email us: HopkinsUSTAR@jh.edu

**APPLICATIONS DUE
JANUARY 24, 2025**



SO YOU WANT TO BE A BEEKEEPER: INTRODUCTION TO THE WORLD OF BEES



THIS BEGINNER-FRIENDLY CLASS IS DESIGNED TO INTRODUCE YOU TO THE FASCINATING WORLD OF BEEKEEPING.

THE **FREE CLASS**, OFFERED BY UMES EXTENSION

YOU'LL LEARN THE BASICS OF BEE BIOLOGY, HIVE MANAGEMENT, AND THE ESSENTIAL TOOLS NEEDED TO CARE FOR A HEALTHY COLONY.

TOPICS COVERED INCLUDE SETTING UP A HIVE, UNDERSTANDING BEE BEHAVIOR, MANAGING SEASONAL CHALLENGES, AND HARVESTING HONEY.

WHETHER YOU'RE LOOKING TO START YOUR OWN APIARY OR SIMPLY CURIOUS ABOUT THE ROLE BEES PLAY IN OUR ECOSYSTEM, THIS CLASS WILL PROVIDE THE FOUNDATION YOU NEED TO BEGIN YOUR BEEKEEPING JOURNEY WITH CONFIDENCE.

PRE-REGISTRATION IS REQUIRED FOR EACH PARTICIPANT AS SPACE IS LIMITED. **NO WALK-UPS WILL BE ACCEPTED.**

WHEN: SATURDAY, JAN. 25, 9 A.M.-1 P.M.

WHERE: UMES RESEARCH, EXTENSION, AND TEACHING FARM, 10789 STEWART NECK ROAD, PRINCESS ANNE, MD 21853

COST: FREE

REGISTRATION: PRE-REGISTRATION IS REQUIRED

[HTTPS://WWWCP.UMES.EDU/EXTENSION/CALENDAR_EVENT/SO-YOU-WANT-TO-BE-A-BEEKEEPER-INTRODUCTION-TO-THE-WORLD-OF-BEES/](https://wwwcp.umes.edu/extension/calendar_event/so-you-want-to-be-a-beekeeper-introduction-to-the-world-of-bees/)



UNIVERSITY
of MARYLAND
SCHOOL OF MEDICINE

TU
TOWSON
UNIVERSITY.

SUMMIR

Supporting **U**nderrepresented **M**embers of
Microbiology and **I**mmunology Research

Applications accepted November 1, 2024
through February 1, 2025



Apply through the portal:
<https://training.rlogx.com/project/976AEFAAAC-A02E688642DFB7A188048B/>





MAEOE Annual Conference

The MAEOE Annual Conference, Maryland's largest environmental education event, attracts over 500 educators each February for a dynamic mix of workshops, discussions, networking, exhibits, and resource sharing.

This year's conference, celebrating its 40th anniversary, will be held in **Ocean City, Maryland, from February 6-9, 2025**. The theme is ***MAEOE at 40: Celebrating Nature, Education, and the Outdoors, TOGETHER!***

Registration is now open! If you have questions, please email conference@maeoe.org.

Conference Schedule

On **Thursday**, participate in a day of learning and collaboration focused on high-impact sustainability topics that drive large-scale environmental change.

Friday features Green School sessions exploring the future of sustainability in education, including climate action, green careers, professional development, youth voice, leadership, and stewardship.

Saturday offers a full day of insightful sessions and networking opportunities, celebrating 40 years of nature, education, and the outdoors while looking forward to the future of environmental education.



DISCOVER
YOUR FUTURE



UNIVERSITY OF MARYLAND
EASTERN SHORE
SCHOOL OF PHARMACY

OPEN HOUSE

Friday, February 7, 2025
1:00 - 4:00 PM

Scan QR Code to Register



For questions, please contact
(410) 621-2280 or lbrown1@umes.edu

www.umes.edu/pharmacy



Cosmetic Science

Lab Intensive

Spelman College. | COSMETIC SCIENCE PROGRAM

CALL FOR APPLICATIONS

**APPLICATIONS DUE
MONDAY, FEBRUARY 10, 2025**

**PROGRAM DATES
JUNE 5 - 14, 2025**

[Click here to apply.](#)

Spelman College, renowned for its commitment to preparing Black women for advanced studies and careers in Science, Technology, Engineering, and Mathematics (STEM), has created the **Cosmetic Science Lab Intensive**.

This one-week program aims to encourage Black women to pursue careers in the beauty and personal care sector. Participants will engage in hands-on laboratory activities focused on hair, skin, color, and fragrance formulations.

Additionally, accepted candidates will have the opportunity to attend the Black Beauty STEMist symposia (June 6th - 8th), where they can learn from and network with Black women scientists, formulators, product developers, and entrepreneurs in the beauty and personal care industry.

APPLICATION COMPONENTS:

- Explain your interest in cosmetic science (*250 words max*)
- Explain why you would like to attend the Cosmetic Science Summer Lab Intensive (*250 words max*)
- Transcript
- Letter of recommendation

Campus housing and meals will be provided for participants. Travel will be covered for non-local participants.



FOR MORE INFORMATION

Leyte Winfield, Ph.D.
Director, Cosmetic Science Program
Micaha Brooks
Program Coordinator, Cosmetic Science Lab Intensive
cosmeticscience@spelman.edu
404-270-3595

Apply Now!





Summer Undergraduate Research in the Environmental Sciences (SURES)

Purpose

The Yale Institute for Biospheric Studies offers funded opportunities for Summer Undergraduate Research in the Environmental Sciences. Students will spend 8 weeks during the summer of 2025 conducting research, analyzing data, and writing up their results with the mentorship of a YIBS-affiliated faculty member at Yale University. Projects may be developed into a senior thesis or scientific publication, depending on student interest. Research activities will be supplemented with a light curriculum oriented towards building research capacity, including responsible conduct of research, statistics in R, scientific writing, and applying to graduate school/funding. In addition to their own project, on-campus participants will learn about the broad range of YIBS research through lab tours and discussion groups, along with behind-the-scenes tours of the Yale Peabody Museum collections. Occasional evening and weekend outings will introduce students to the rich natural and cultural heritage of the Greater New Haven region.

Eligibility

The on-campus academic program will run from May 29th to July 25th, 2025. Fellowships will include dormitory housing and meals, a summer stipend of \$5,500, expenses for travel to and from campus, and all research expenses. Rising juniors and seniors from 4-year colleges and universities are eligible to apply; applications from students at 2-year programs will also be considered.

Stipends will be provided via Yale to US citizens, permanent residents, and international students with qualifying visas; where this is not possible, we will work to provide stipends via an agreement between Yale and their home institution but note that we may not be able to accommodate all individual cases. Costs of participation (including housing and dining) will be provided to all participants irrespective of receipt of a stipend. Please note that, while the Yale Office of International Students and Scholars will work with international fellows to facilitate their obtaining an appropriate visa to visit the US, the program cannot guarantee visa access (to visit the US or other project destinations) and that project participation may be contingent on obtaining appropriate visas. Undocumented students are eligible to participate subject to Yale's existing policy. New Haven-based projects will be open to all applicants, but please see project-specific restrictions for international projects on the projects page.

Requirements

To apply, please upload a resume and 1-page personal statement and complete the application form by February 13th, 2025. Students will be supported to work on one of the projects described here. YIBS seeks a diverse pool of applicants for the Summer Undergraduate Research in the Environmental Sciences fellowship. Applicants from historically excluded groups in the environmental sciences are strongly encouraged to apply. Please note that Yale University strongly encourages all students, faculty, staff, postdoctoral/postgraduate trainees, and visitors to receive all COVID-19 vaccinations that are recommended by the Centers for Disease Control and Prevention and for which they are eligible. Please also note that any research-related international travel will require a passport and may require additional vaccinations.

How to apply

The **application process** for 2025 is now open. Applications are due on February 13th, 2025 at 11:59 PM (Eastern).

Co-Directors: Eric Sargis (Anthropology), Carla Staver (Ecology & Evolutionary Biology), and David Heiser (Yale Peabody Museum)

Applications are due by February 13th, 2025. For more information and to **apply**, please visit <https://yibs.yale.edu/sures>



JOHNS HOPKINS

M E D I C I N E

The Johns Hopkins Summer Jobs Program is sponsored by Johns Hopkins Health System and Johns Hopkins University. The program provides students surrounding JHU campuses the opportunity to complete a seven-week long paid internship in one of various departments throughout the Institution. The program promotes exposure to careers and workplace culture, while providing an educational experience that promotes mentoring and fosters personal responsibility.

Application Period: January 3 - February 16, 2025

Information and application here:
<https://www.hopkinsmedicine.org/human-resources/learning-development/youth/summer-jobs/application>



2025 USDA-ARS and 1890 LGUs Symposium

Creating Synergies that Matter: Agricultural Production, Food Safety, and One Health

USDA-ARS and UMES are pleased to announce a joint symposium that will feature keynote presentations, lightning talks, break-out sessions, and poster displays to foster collaborations, learn about available resources, leverage funding capabilities, and develop opportunities to train the next generation of scientists.

Participants –
Scientists, Postdocs, Graduate Students

Location –
National Agriculture Library
10301 Baltimore Ave
Beltsville, MD 20705

Dates –
4/24/2025 - 4/25/2025 (Thursday, Friday)

We hope to see you there!



Major focus areas:

- Food systems - Safety, Security, and Quality
- Plant and Soil Health
- Animal and Human Health
- Natural Resources
- Smart Agriculture

For more information, please contact:

Dr. Le Ann Blomberg (leann.blomberg@usda.gov)

Dr. Caleb Nindo (cinindo@umes.edu)

 **USDA** Agricultural Research Service
U.S. DEPARTMENT OF AGRICULTURE


HBCU 1886
**UNIVERSITY OF MARYLAND
EASTERN SHORE**