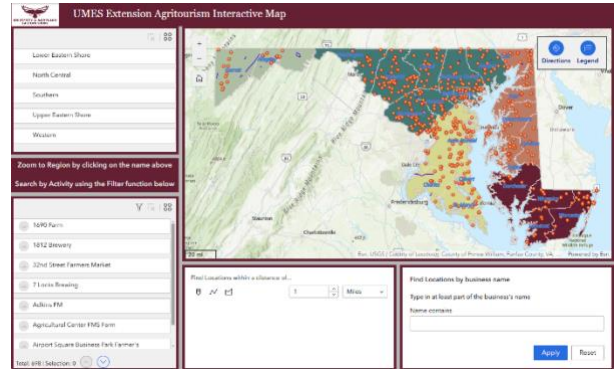


# Agritourism Interactive Map<sup>1</sup> of Maryland?

Are you planning to visit an agritourism operation in Maryland? Are you looking for a particular winery or brewery, a U-Pick, lavender farm, farm stay, or farmers market? The **UMES Agritourism Interactive Map (UMES-ATIM)** helps you find this place. **ATIM** is a search and mapping interface describing the spatial distribution of agritourism locations. The interface comprises distance tools that allow users to measure distances, get directions, plan, and create maps useful for visiting agritourism sites and understanding the location and activities.



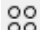


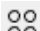

## Agritourism venues can be searched by:

- Type
- Place name
- Address
- Activity
- Seasonality
- Region
- County
- Farmers markets can be searched by the days and time of day they operate

### How to Use the Map?

Visit: <https://wwwcp.umes.edu/extension/community/>---->

Go to: [Interactive Map](#)

Boxes	Map
Left Top – List of Regions – Click on name to zoom to region  Action box	 <ul style="list-style-type: none"> <li>Zoom in</li> <li>Zoom out</li> <li>Zoom to full extent (home)</li> </ul>
Left Bottom  Activity Filter – Search by County and Activity  Action box	 Click to open Directions and Legend
	<ul style="list-style-type: none"> <li>Find Locations within a distance of .... Click on map or use Filter</li> <li>Find Locations by Business Name Enter name in box</li> </ul>

Click Action box to access other functions such as Set Location, Zoom to, Pan to, Statistics, and Export

For more information about the Agritourism Program, contact Prem B. Bhandari at the University of Maryland Eastern Shore (UMES) Extension at [pbbhandari@umes.edu](mailto:pbbhandari@umes.edu) or [agritourism@umes.edu](mailto:agritourism@umes.edu).

<sup>1</sup>This Map App is created with the Web Mercator Coordinate System. It displays the spread of agritourism sites across the State of Maryland. This Map is developed by Dr. Kingsley Ejiogu and Ms. Tracie Bishop at the University of Maryland Eastern Shore, Maryland.