

Hardwire Bulletproof Whiteboards: Security & Safety Training

Hardwire, LLC
1947 Clarke Avenue
Pocomoke City, MD 21851
(410) 957-3669

Hardwire Background

- Leading designer and producer of composite-based armor systems for ground vehicle, aircraft, boat, and personnel applications.
- Armor supplier for the DoD Mine Resistant Ambush Protected (MRAP) Vehicles: 5,075 kits with ~350,000 individual parts, 100% on time delivery, 0 rejected parts.
- Critical domestic and overseas infrastructure protection: Bridges, tunnels, utilities, and buildings.
- Shields, clipboards, and ballistic protection panels for law enforcement officers, SWAT teams, and commercial applications.

Military Vehicle Armor



Infrastructure Protection



Police Equipment



Hardwire Facilities

Hardwire is the world's largest Dyneema armor producer with automated, quality-controlled manufacturing.



7,500 Ton Multi-Daylight Laminating Press



12,000 Ton Multi-Daylight Laminating Press



63,000 ft² Production Facility

Training Goals

- **To enhance awareness of your campus safety and security procedures.**
- **To increase preparedness in case of a crisis situation.**
- **To learn and demonstrate the tactical skills required to utilize the Hardwire Bulletproof Whiteboard in a defensive manner to protect yourself and your students.**

School Shooting Analyses

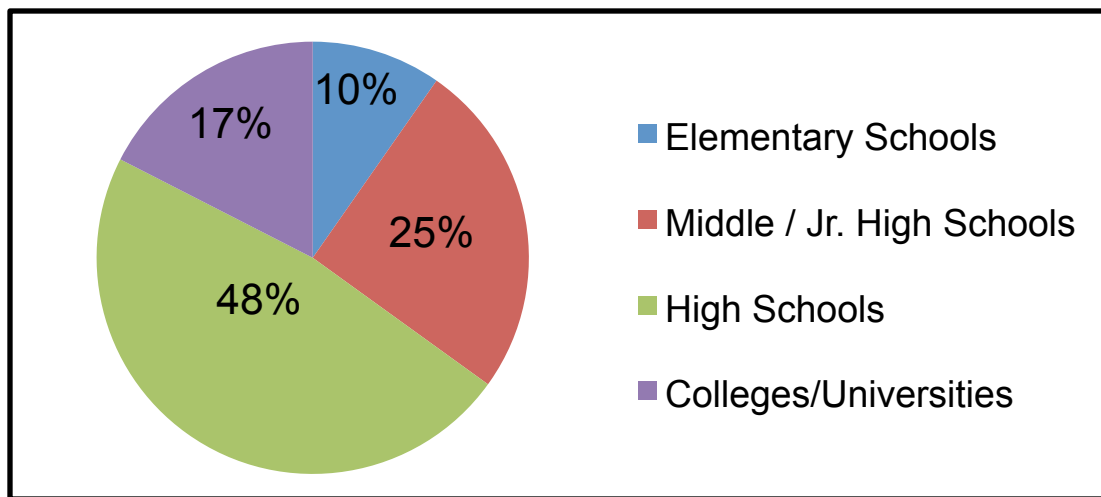
10 Key Findings of the Safe School Initiative*:

1. Incidents of targeted violence at school rarely were sudden, impulsive acts.
2. Prior to most incidents, other people knew about the attacker's idea and/or plan to attack.
3. Most attackers did not threaten their targets directly prior to advancing the attack.
4. There is no accurate or useful "profile" of students who engaged in targeted school violence.
5. Most attackers engaged in some behavior prior to the incident that caused others concern or indicated a need for help.
6. Most attackers had difficulty coping with significant losses or personal failures. Moreover, many had considered or attempted suicide.
7. Many attackers felt bullied, persecuted or injured by others prior to the attack.
8. Most attackers had access to and had used weapons prior to the attack.
9. In many cases, other students were involved in some capacity.

10. Despite prompt law enforcement responses, most shooting incidents were stopped by means other than law enforcement intervention.

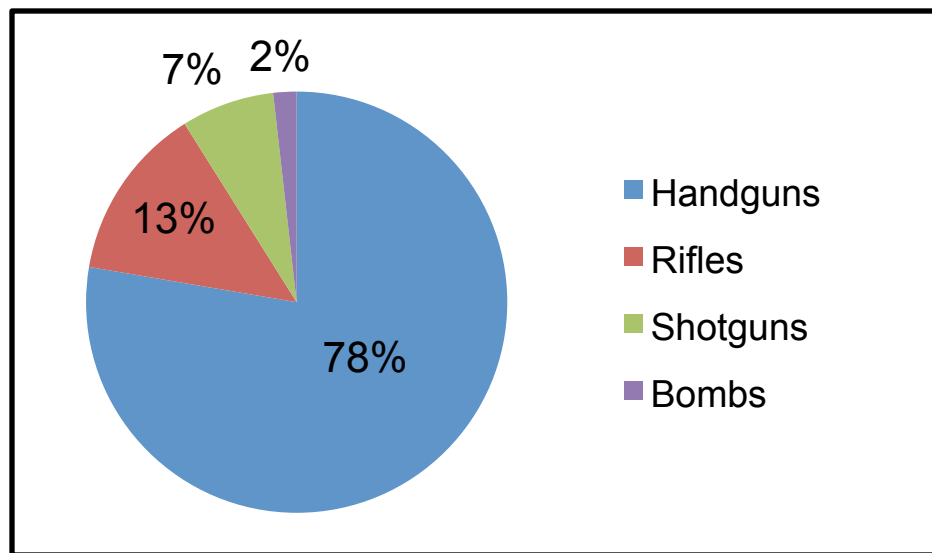
History and Trends of School Shootings (1980 – 2012): Number of Shootings

- An estimated 103 school shootings have occurred since 1980:
 - 10 in Elementary Schools
 - 26 in Middle Schools or Jr. High Schools
 - 49 in High Schools
 - 18 in Colleges or Universities
- At least 70 of the attacks have had a specific target in mind (teacher, principal, other student).
- 96 attacks had some type of personal association to the school.
- 7 attacks had no known association to the school.
 - 5 in elementary schools, 1 in a middle school, 1 in a high school.



History and Trends of School Shootings (1980 – 2012): Type of Weapons Used

- Many school shooters used more than one type of weapon:
 - 87 handguns
 - 15 rifles (at least 6 were .22 caliber)
 - 8 shot guns
 - 2 bombs
- The Hardwire Bulletproof Shield would defeat ~92% of the rounds used in previous incidents.



Defensive Tactics for Active Shooter Events

- First and foremost, follow your campus security procedures!
 - <http://www.umes.edu/police/Default.aspx?id=346>
 - Use the campus alerts.
- Assess the situation before reacting.
- DHS recommends “Run, Hide, Fight” in the event of an active shooter.
 - The Bulletproof Whiteboard provides a tool to “fight” in the worst case scenario.

UNIVERSITY of MARYLAND EASTERN SHORE

DEPARTMENT OF PUBLIC SAFETY

The University of Maryland Eastern Shore Department of Public Safety is committed to providing the highest quality of service to the campus community and the public. We are constantly striving to meet the needs and rights of crime victims/witnesses. Campus Police is a division of Administrative Affairs.

This information is published and distributed in compliance with the Joanne Clery Act, Student Right to Know and Campus Security Act, and plus-Free Campus/Drug-Free Workplace legislation.

The information posted on this site is directly entered from the offices of Campus Police. For questions relating to these crimes, you may contact the Chief of Police. Any technical questions or difficulties may be directed to the Webmaster.

The UMES Police Department is located behind Waters Hall

View the Annual Student Right to Know Report

Staff And Contacts	Crime Alerts	"Silent Watch" Online Crime Reporting
Reported Crimes and Incidents	UMES Crime Stats	Princess Anne Crime Stats
Parking Regulations	Crisis Response Plan	Sexual Harassment Policies
Emergency Resources Guide	Campus Safety Brochure	Campus Safety Handout

RUN > HIDE > FIGHT

SURVIVING AN ACTIVE SHOOTER EVENT

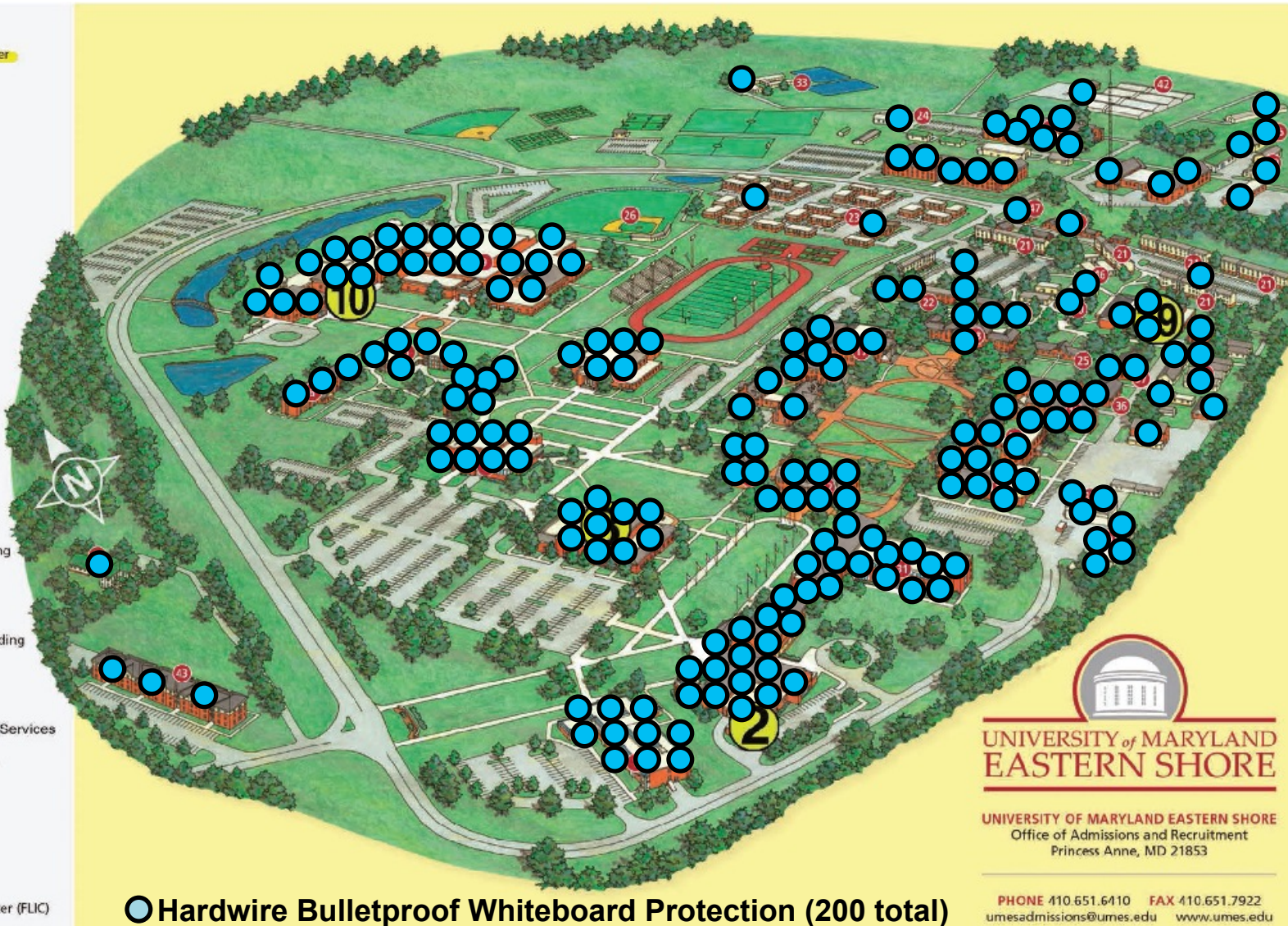
0:05 / 5:56

RUN! HIDE! FIGHT! DHS Offers Tips To Survive A Shooting

<http://www.youtube.com/watch?v=p4IJA5Zpzz4>

University of Maryland Eastern Shore

- 1. Kiah Hall
- 2. Richard A. Henson Center
- 3. Ella Fitzgerald Performing Arts Center
- 4. Student Development Center
- 5. Nuttle Hall
- 6. Court Plaza
- 7. Wicomico Hall
- 8. Tawes Gymnasium
- 9. William P. Hytche Athletic Center
- 10. Student Services Center
- 11. Bird Hall
- 12. John T. Williams Building
- 13. Waters Hall
- 14. Murphy Hall
- 15. George Washington Carver Science Building
- 16. Wilson Hall
- 17. Frederick Douglass Library
- 18. Irigg Hall
- 19. Thomas/Briggs Arts and Technology Center
- 20. Early Childhood Research Center
- 21. Student Apartments
- 22. Plaza Hall
- 23. Residence Life/Student Clusters
- 24. Agricultural and Research Facilities
- 25. Tanner Alrway Science Center
- 26. Athletic Fields
- 27. Lida Brown Building
- 28. University Terrace
- 29. Food Science and Technology Building
- 30. Physical Plant
- 31. Hazel Hall
- 32. Public Safety
- 33. Swine Facility
- 34. Crop Research and Aquaculture Building
- 35. Agricultural Research Building
- 36. Banneker Hall
- 37. Spaulding Hall
- 38. Temporary Classroom Building
- 39. University Printing and Document Services
- 40. Poultry Research Center
- 41. Charles Drew Student Health Center
- 42. Commercial Greenhouse
- 43. Hawks Landing
- 44. President's House
- 45. Harford Hall
- 46. Access and Success Building
- 47. WESM Radio Station
- 48. Somerset Hall
- 49. Foreign Language Instructional Center (FLIC)



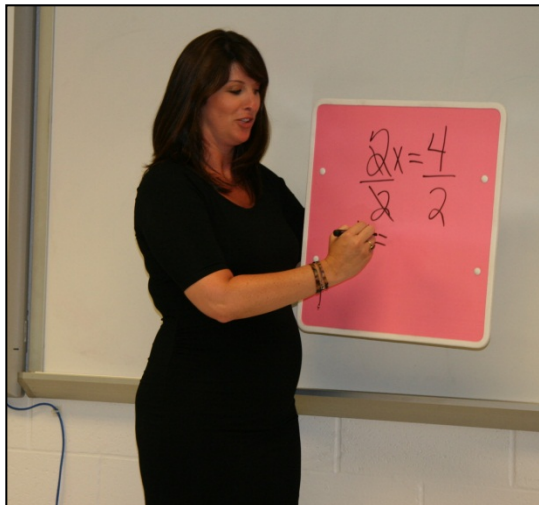
UNIVERSITY OF MARYLAND EASTERN SHORE
Office of Admissions and Recruitment
Princess Anne, MD 21853

PHONE 410.651.6410 FAX 410.651.7922
umesadmissions@umes.edu www.umes.edu

○ Hardwire Bulletproof Whiteboard Protection (200 total)

Bulletproof Whiteboard: Everyday Use

- Hand-held whiteboard used as a portable, interactive teaching tool.
 - 18" x 20" in size and weighs less than four pounds.
 - Three easy-to-hold handles for portability.
- Blends well in the school – no negative psychological impact on students.
- Keep it accessible!
 - When not in use, the whiteboard should be stored / hung near the door.
- Applicable to classroom, cafeteria, library, office, field, and parking lot use.



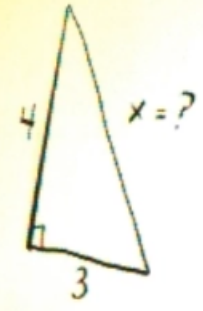
Bulletproof Whiteboard: Emergency Use

- Last line of defense for faculty, staff, and students in an emergency.
- Provides layered interior protection that currently does not exist.
- Absorbs ammunition from handguns, shotguns, and some rifles (certified to NIJ 3A).
 - Same protection level that police / SWAT / Immigration & Customs Enforcement officers use.
- >3 times larger than the average-sized piece of police body armor.
- Constructed of Dyneema fiber, the only man-made fiber stronger than spider silk per density.
 - 2.5 times stronger than Kevlar but light enough to float.



HARDWARE

Pythagorean Theorem



$$3^2 + 4^2 = x^2$$

$$\sqrt{3^2 + 4^2} = x$$

$$5 = x$$

HARDWARE

Tactics with the Bulletproof Whiteboards

1. Tactically place schoolroom furniture.

- a. Use furniture to your advantage.
- b. Strategically place bookcases or file cabinets.
 - i. Greatly reduces the intruder's field of vision or danger zone.
 - ii. Greatly limits the intruder's lateral movement.

2. Tactically place the students inside the classroom.

- a. Place students outside of the field of vision or danger zone.
- b. Spread the students out as much as possible.

3. Tactically place yourself inside the classroom.

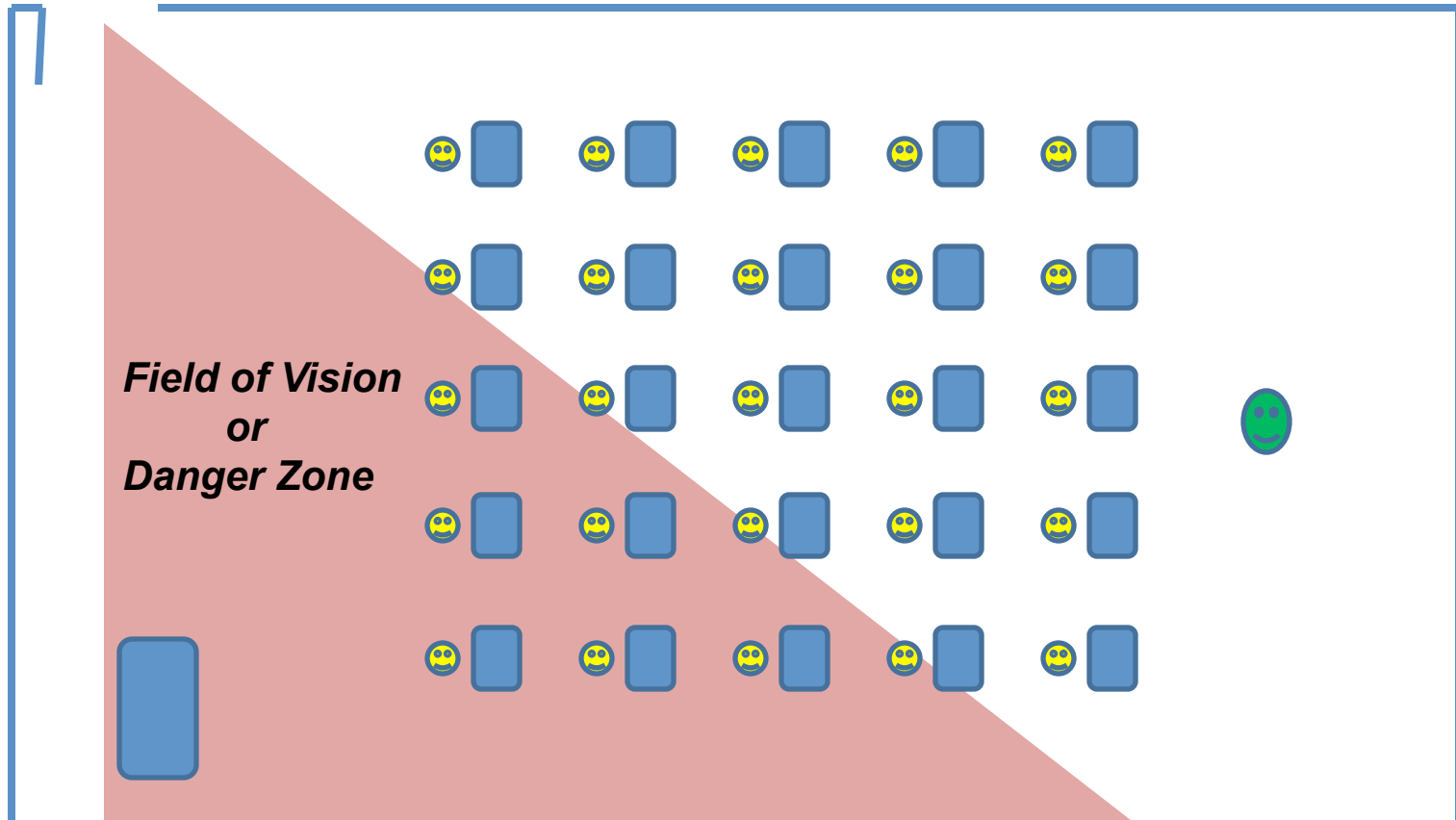
- a. Place yourself between the students and the doorway if practical.
- b. Stand about 6 feet from the door, ideally next to a file cabinet or bookcase.
- c. Be prepared. Be aware. Know yourself and your team.

Defensive Tactics for the Classroom: Corner Doorway Layout

Prepare for an intruder emergency:

1. Determine the field of vision and identify the danger zone in your classroom.
2. Execute your tactics: Place furniture, students, and yourself.

Hallway Entrance

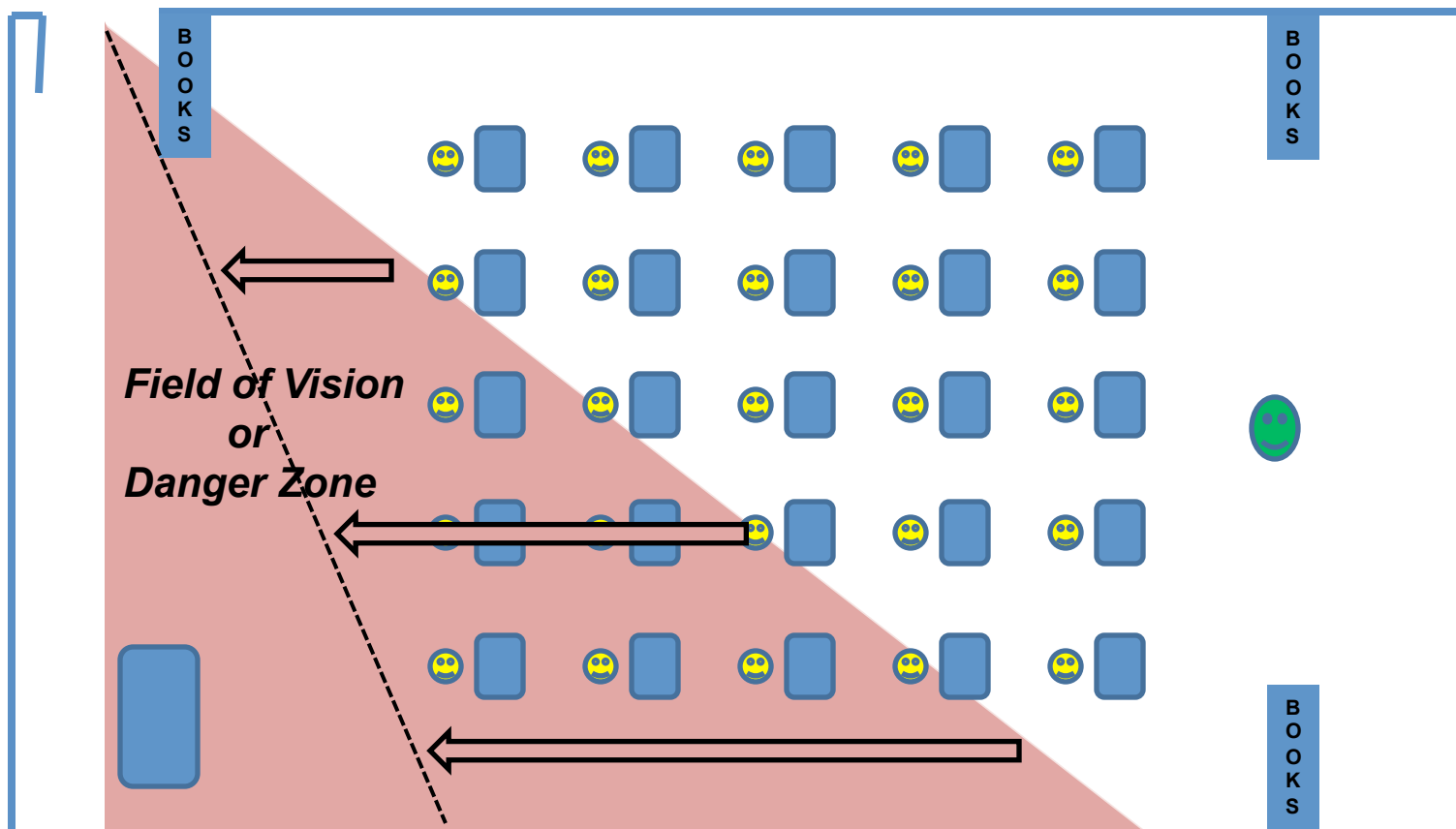


Defensive Tactics for the Classroom: Corner Doorway Layout (continued)

Furniture:

1. Place bookcases or file cabinets to reduce the field of vision.
2. This also limits the lateral movement of an intruder.

Hallway Entrance

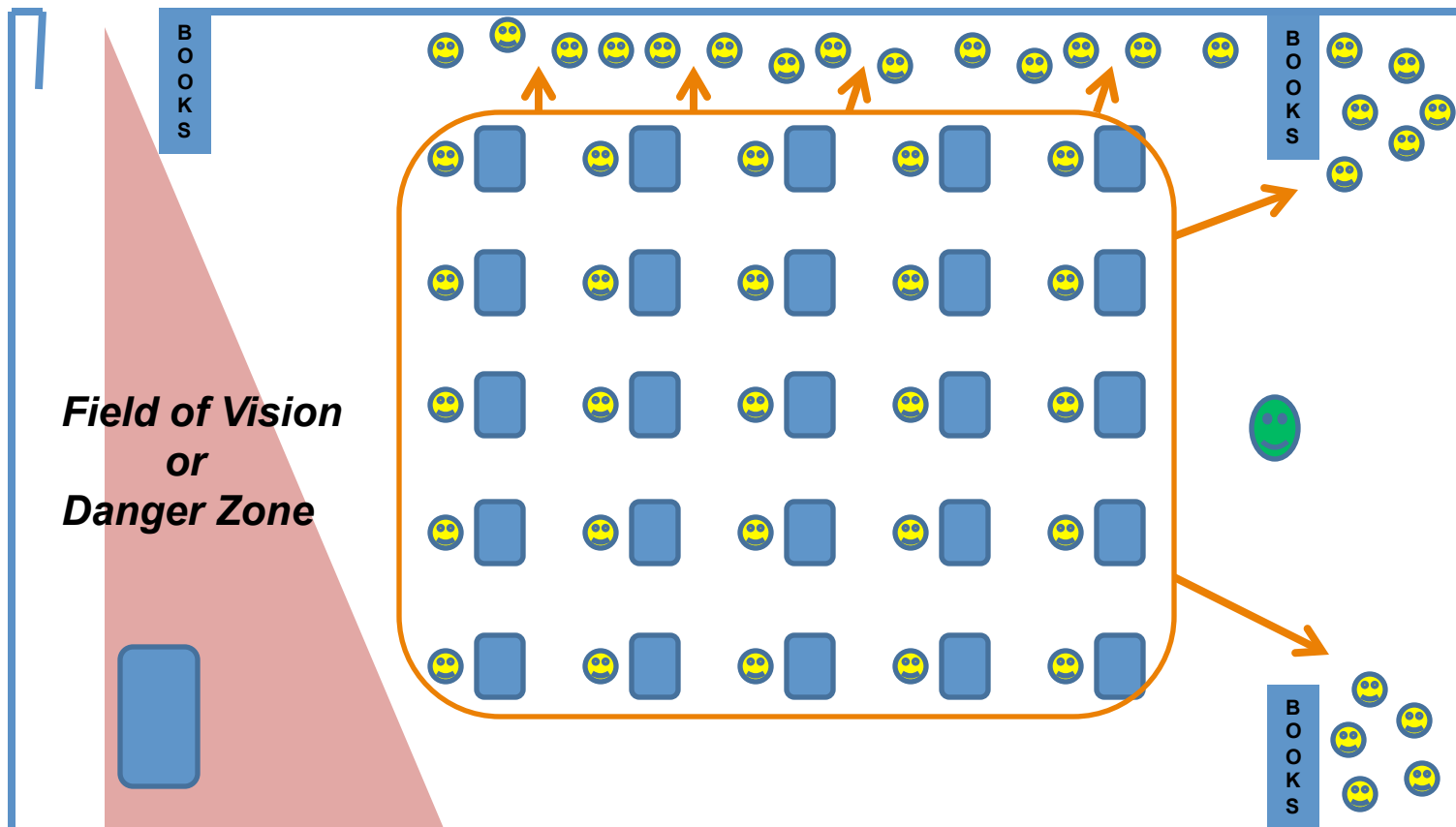


Defensive Tactics for the Classroom: Corner Doorway Layout (continued)

Students:

1. Move the students out of the danger zone.
2. Space them out along the wall. It is preferable to be against a cinderblock wall.

Hallway Entrance

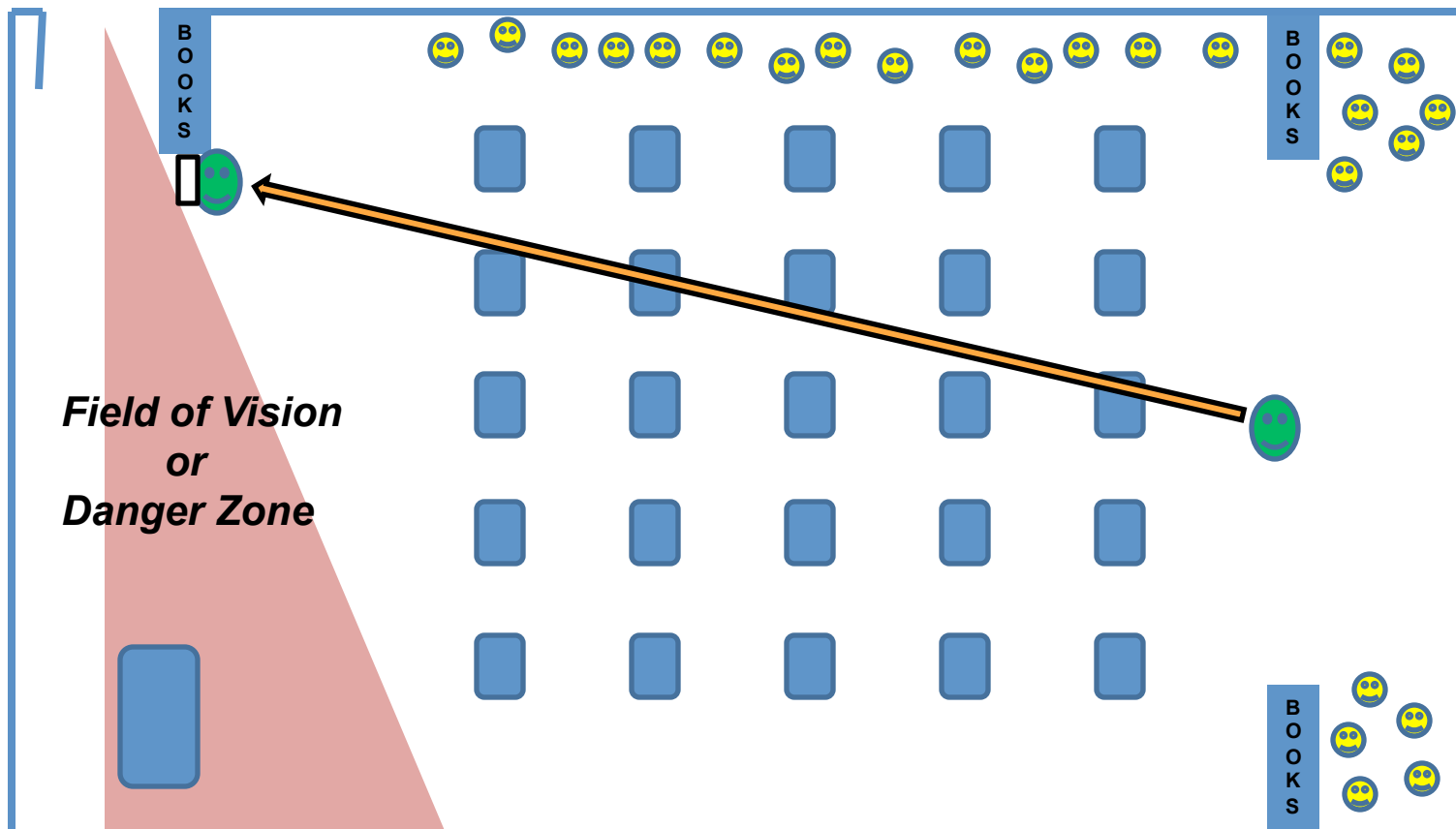


Defensive Tactics for the Classroom: Corner Doorway Layout (continued)

Yourself:

1. Position yourself about six feet away from door.
2. Keep students behind you.

Hallway Entrance



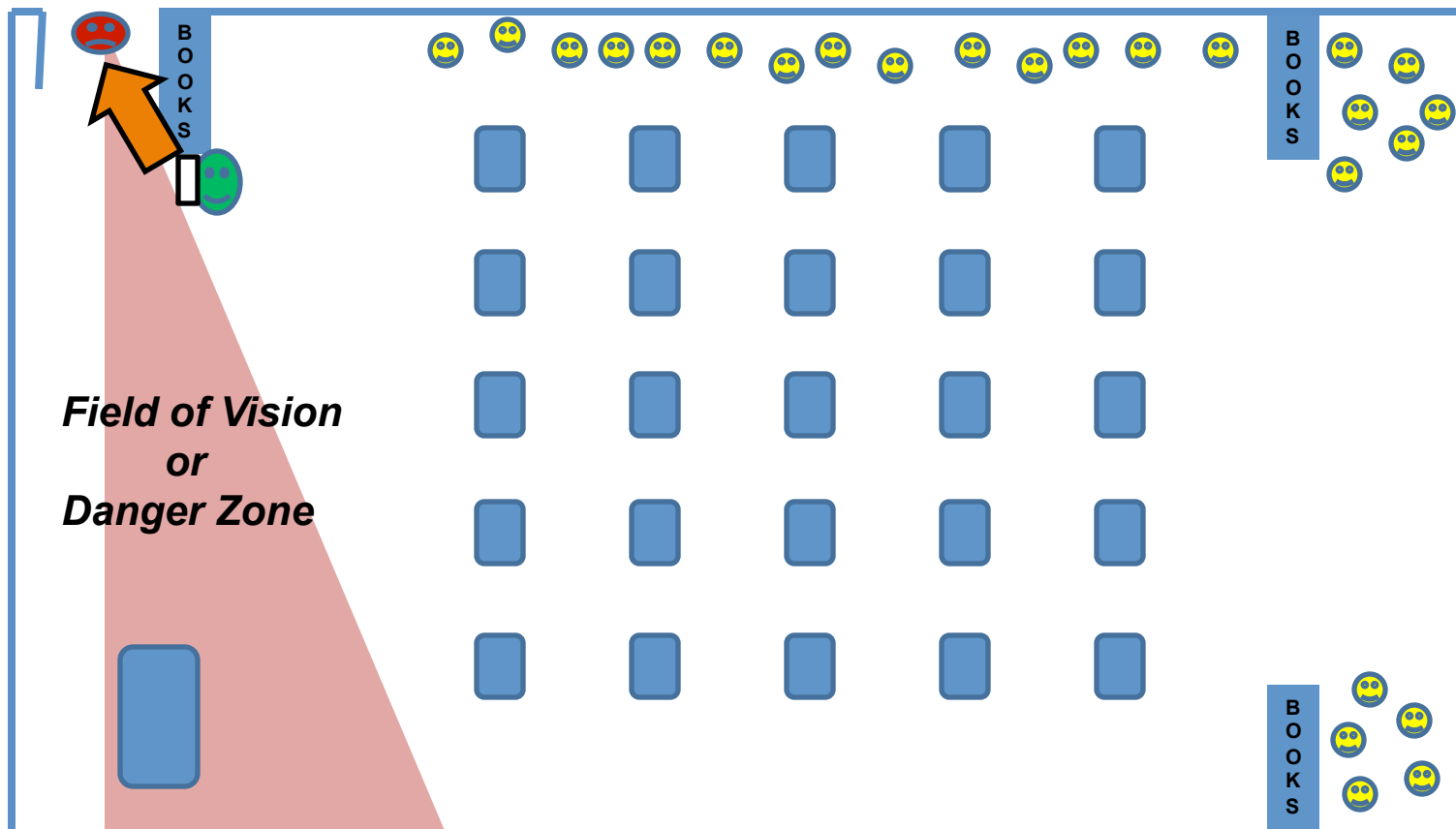


Defensive Tactics for the Classroom: Corner Doorway Layout (continued)

If the intruder enters the room and you are confronted:

1. Move directly and rapidly at the intruder.
2. Strike the intruder hard and repeatedly. Yell for “HELP” loudly.

Hallway Entrance



Fight Mode

If the intruder enters the room and you are confronted:

- Directly and rapidly advance on the shooter. The whiteboard will absorb the ammunition. The safest place to be is behind the shield!
- Once the shooter is contacted, push as hard as you can. Keep the shooter off balance.
- Try to disarm the shooter by striking him/her with the whiteboard quickly and repeatedly. Aim for the neck, jaw, eyes and nose. Don't stop.
- Use your voice and scream at the shooter. Yell "GET OUT" or "HELP" loudly.
- If the weapon becomes dislodged, grab it.

Use all the resources available:

- Add tripping hazards.
- Instruct students to assist as needed.

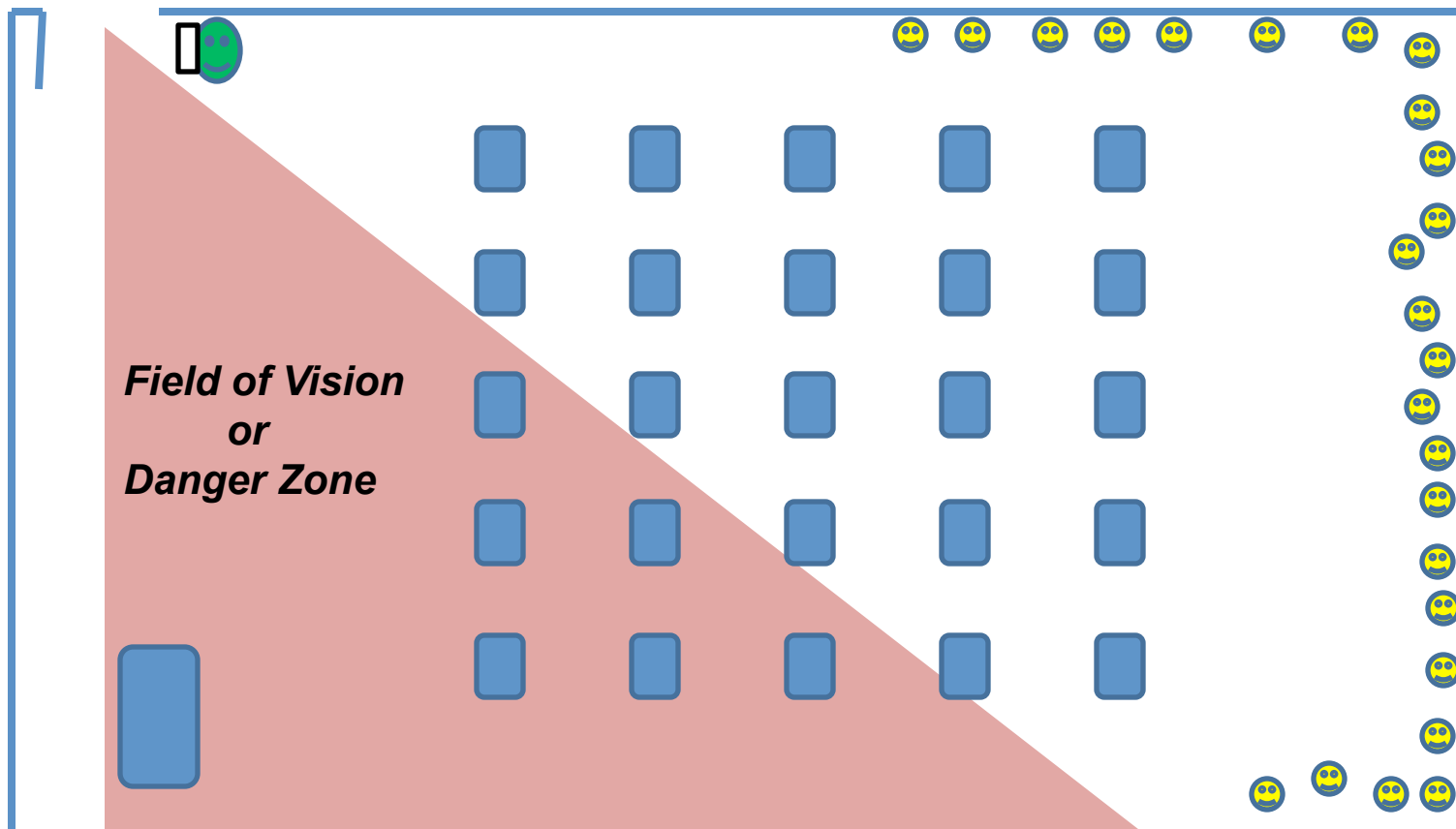
Remember: Your job is to survive and buy time for the police.

Defensive Tactics for the Classroom: Corner Doorway Layout (continued)

If you do not have any books or furniture to reduce the field of vision:

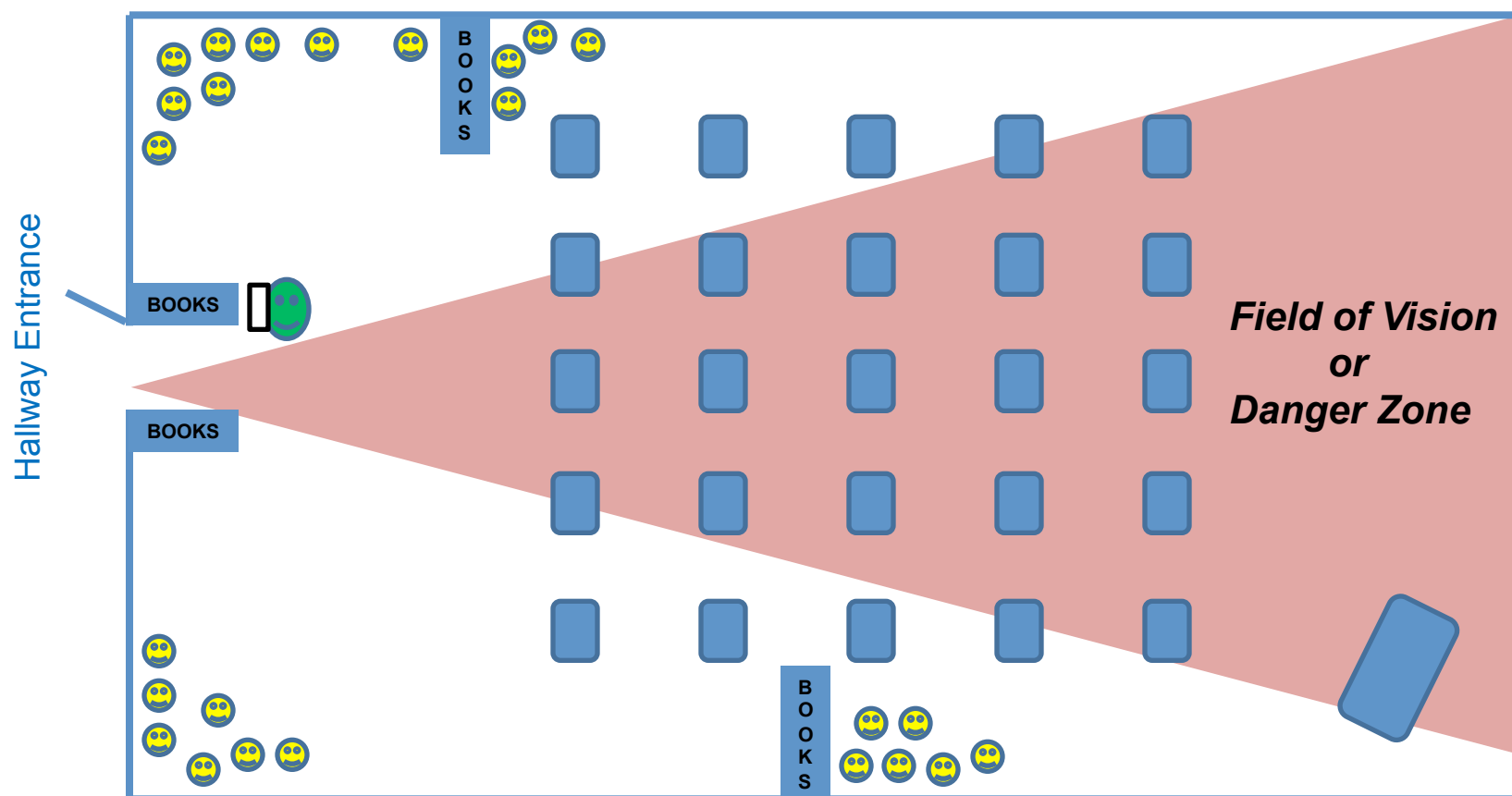
1. Position yourself along the wall.
2. Move students out of the danger zone.

Hallway Entrance



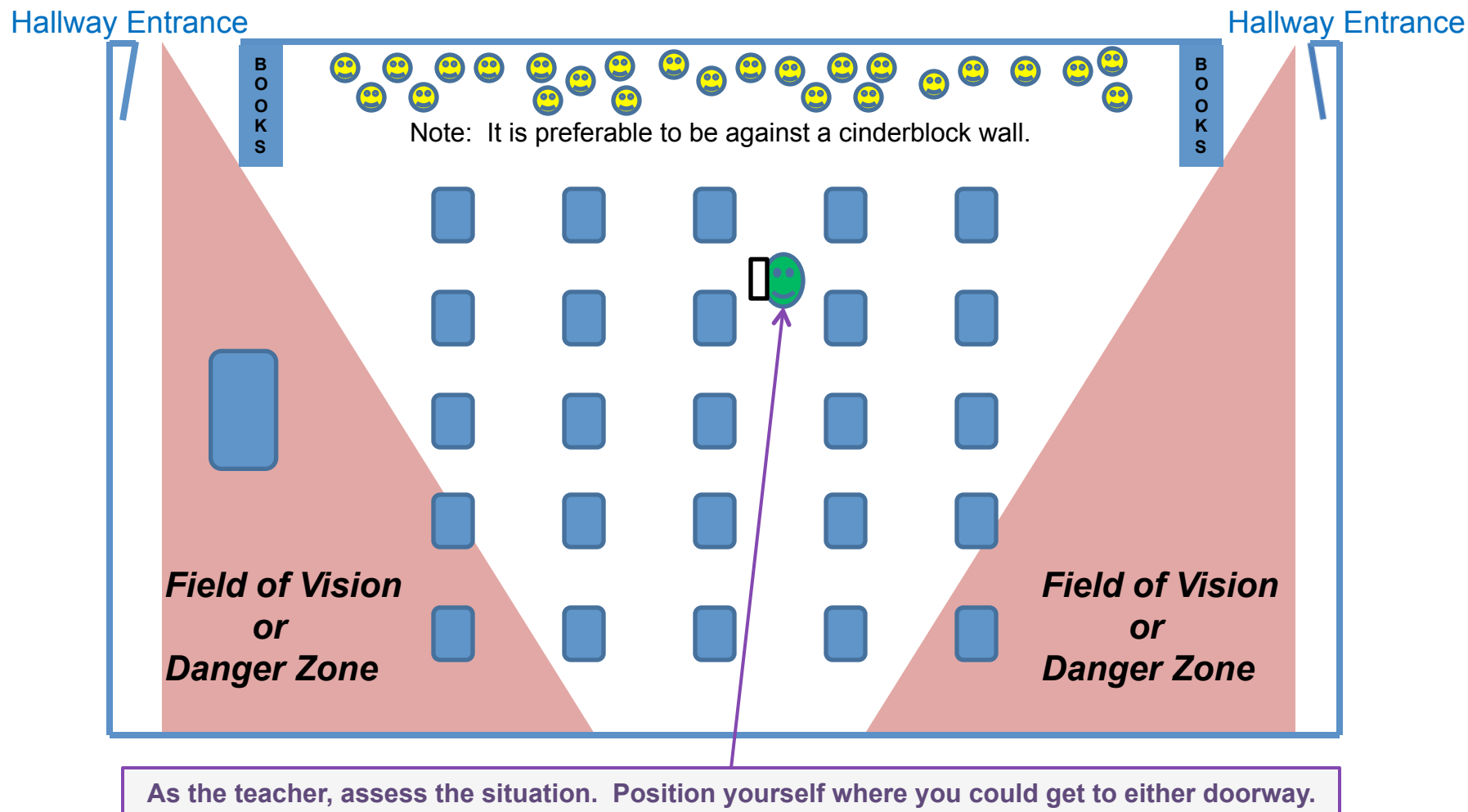
Defensive Tactics for the Classroom: Middle Doorway Layout

1. Determine the field of vision and identify the danger zone in your classroom.
2. Execute your tactics: Place furniture, students, and yourself.



Defensive Tactics for the Classroom: Two Doorway Layout

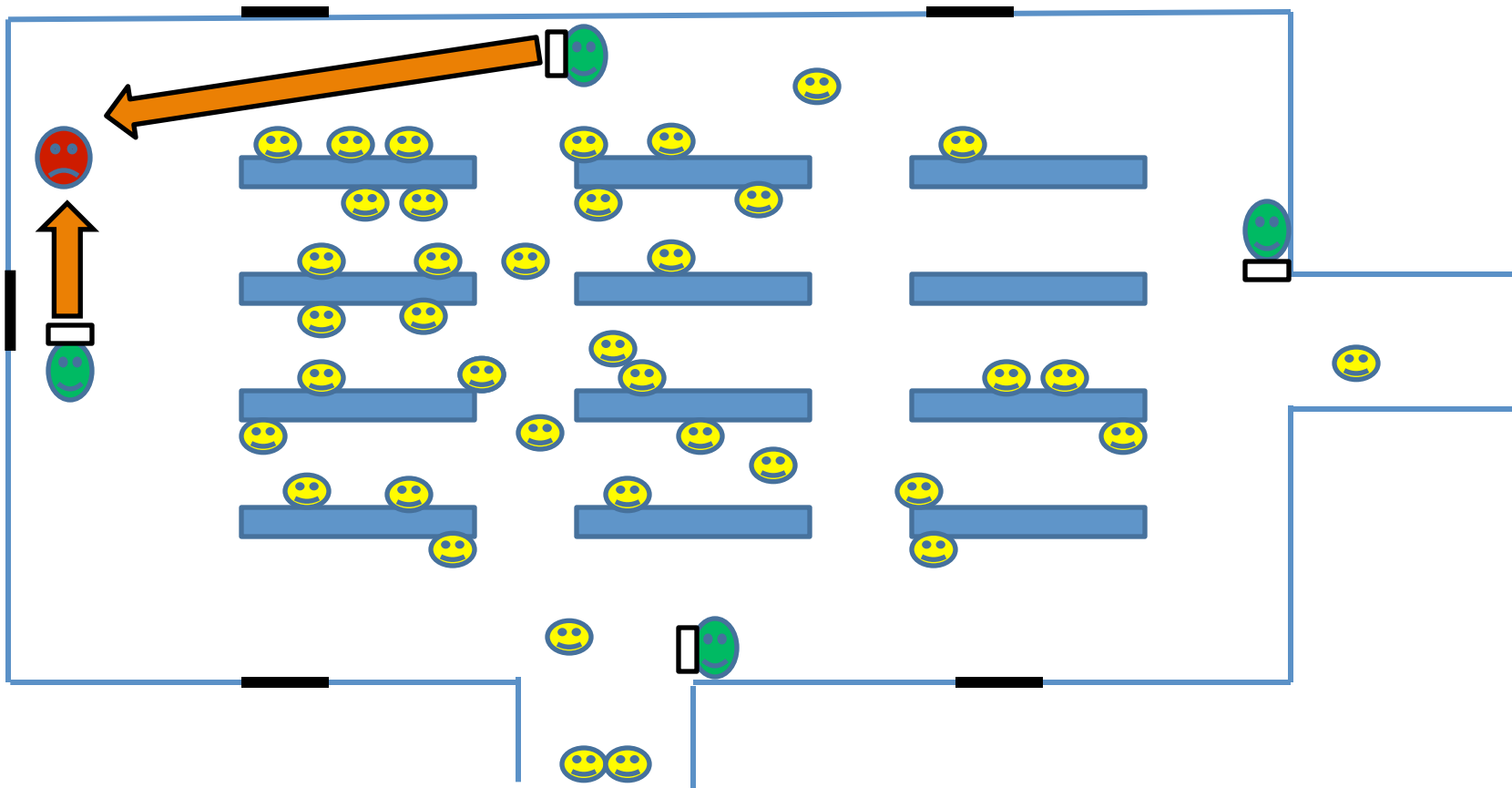
1. Determine the field of vision and identify the danger zone in your classroom.
2. Execute your tactics: Place furniture, students, and yourself.



Cafeteria or Multipurpose Room Tactics

If an active shooting begins:

1. Teachers closest to the shooter must react.
2. Move towards the shooter.

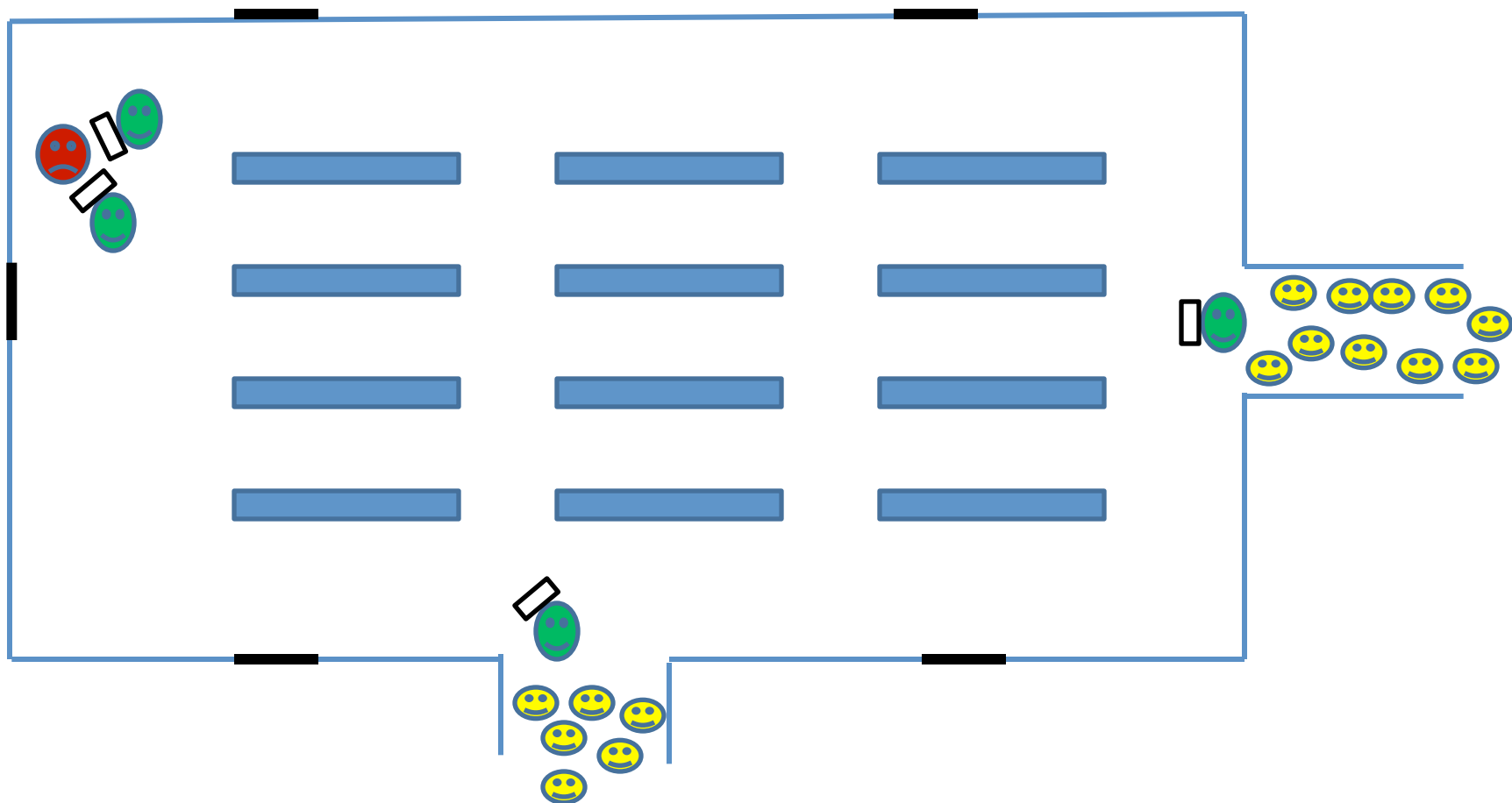


Cafeteria or Multipurpose Room Tactics

(continued)

If an active shooting begins:

1. Teachers not engaged with the shooter should evacuate the students.
2. Because it is very difficult to shoot a moving target, encourage the students to move quickly.

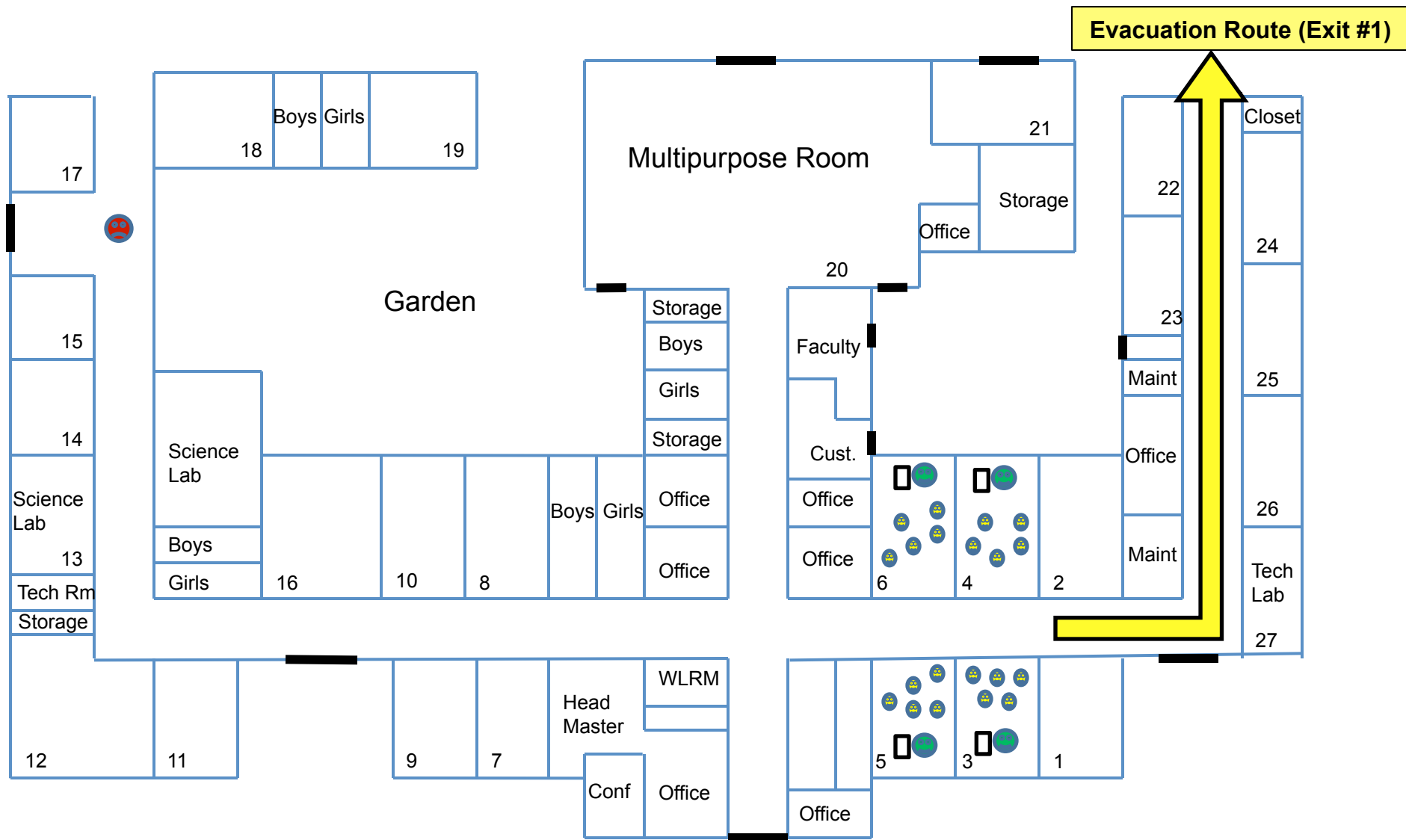


Classroom Evacuations

- During a “Code Red,” an evacuation may be ordered by law enforcement.
 - Always follow the instructions given by law enforcement!
- Evacuations may occur if a hostage situation exists, before or after an active shooter situation, or if the situation is static.
 - Because it is very difficult to shoot a moving target, encourage the students to move quickly.
- The Hardwire Bulletproof Whiteboard can be utilized effectively in evacuation scenarios using teamwork and tactical formations.
 - Teachers in adjacent rooms should work in unison in leading and trailing the evacuation.
 - Surround the students from the front, rear, and sides if possible.

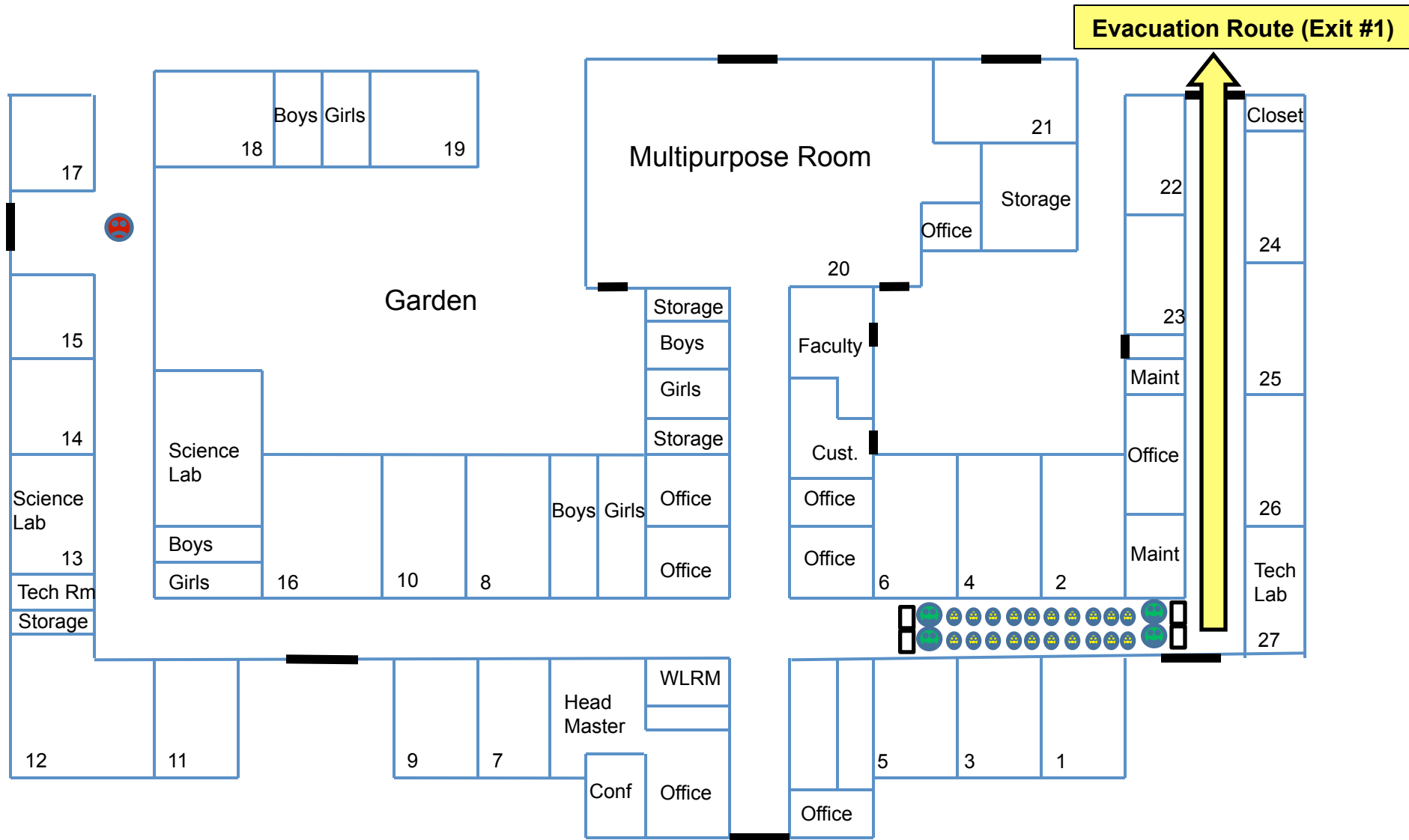
Classroom Evacuations

(continued)



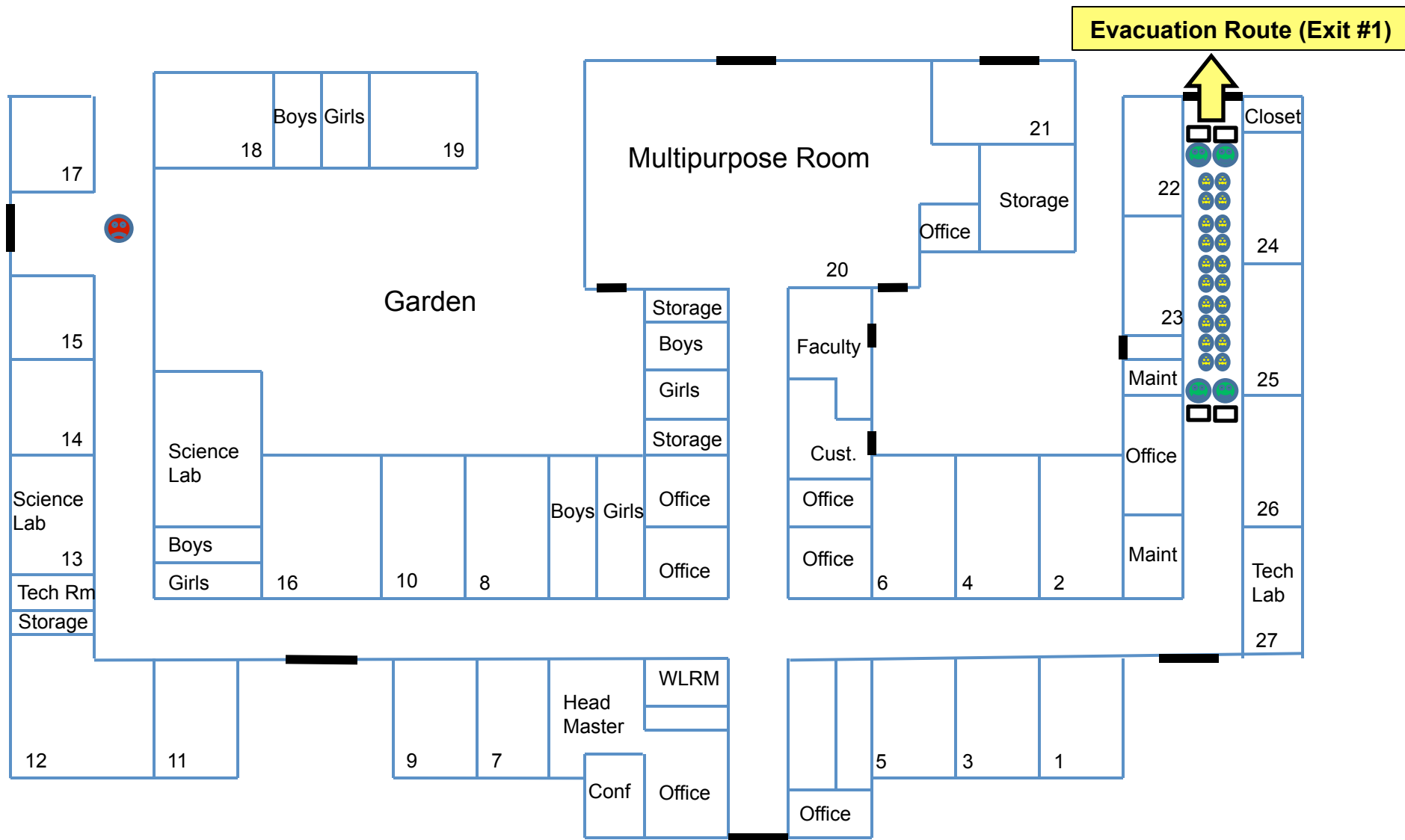
Classroom Evacuations

(continued)



Classroom Evacuations

(continued)



Summary

- **First and foremost, follow your campus security procedures!**
<http://www.umes.edu/police/Default.aspx?id=346>
- **Assess the situation before reacting. If you confront an active shooter, use your best instincts.**
- **Your survival ensures your students' survival.**
- **Your students are your team, use them.**
- **Plan, Practice, Execute.**

Impact Demonstrations

Questions?