

# ARD Updates

THE ASSOCIATION OF 1890 RESEARCH DIRECTORS

August 2018, Vol. 9, Issue 8



Dr. Moses Kairo

## Message from the Chair

I sincerely thank you for participating in and being fully engaged in ARD's summer business and the Joint COPS meetings in Guadalajara, Mexico. The University of Guadalajara is one of the leading research universities in Mexico and went over-the-top in hosting an awesome meeting. ARD members also were afforded an opportunity to network with members of the Commission on International Initiatives (CII) and the Board on Human Sciences (BoHS). I would also like to acknowledge and thank

Dr. Albert Essel, AEA executive administrator, for involvement in these sessions.

Although the agenda was quite ambitious, let me focus briefly on four important takeaways – the ARD Strategic Agenda, the New Seeds Initiative, the 2018 Farm Bill and the Centers of Excellence.

The updated ARD Strategic Agenda will focus on people, programs, partnerships, platforms and places and will recognize the hard work, dedication and incredible talents of many people who positioned the 1890s for the next "giant leap." The Strategic Agenda will be framed to elevate the research and education mission areas in the food and agricultural sciences at the 1890s in very focused and intentional ways while concurrently making us relevant and responsive to our clientele. This Strategic Agenda will be based, in large part, on the USDA Secretary Perdue's Rural Prosperity report, but will also extract elements from the National Academies' [Science Breakthroughs 2030](#), APLU's [Challenge of Change](#), and NIFA's Strategic Plan.

As discussed earlier, we modified the New Seeds Initiative with a greater focus on bold, creative and innovative ideas from our research scientists. Our intent is to innovatively advance ARD's priorities and goals with an emphasis on making critical contributions to solutions to help achieve agricultural and rural prosperity in the U.S. We also shortened the length of the proposal, extended the time to complete the work, increased the funding per project and included crosscutting issues that

Please see Kairo on Page 2

## FVSU uses nanoscale tech to train students and farmers

Nanotechnology involves seeing and controlling the smallest particles that make up products used in everyday life. As the global population continues to expand, this progressive science could help improve crop productivity and the environment, said FVSU Researcher Dr. Hari Singh.

"A nanometer is one-billionth of a meter," he said. "When looking at materials at the nano size, the properties tend to change. It is easy to modify those properties for different purposes. There are millions of possibilities when applying nanotechnology to food, animals, drug delivery, diagnostics, therapeutics and various consumer product developments."

One viable solution to make biofuel more cost competitive is to produce high value co-products from lignocellulosic biomass using the biorefinery concept, Singh said. A biorefinery is a facility that integrates biomass conversion processes and equipment to produce fuels, power, heat and value-added chemicals from biomass.

Please see FVSU on Page 2

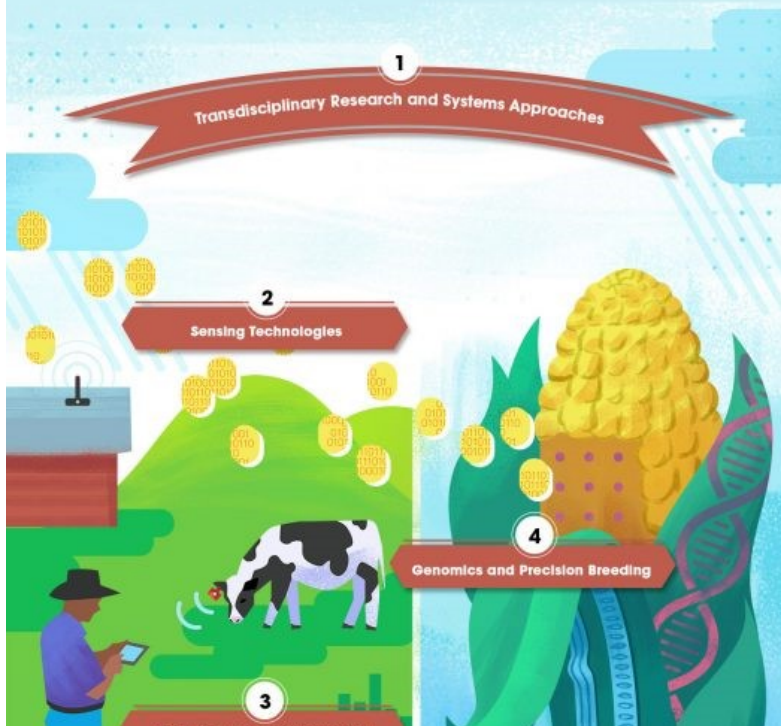


Dr. Singh and students in his lab. Photo credit: Latasha Ford, FVSU



# Science Breakthroughs to Advance Food and Agricultural Research by 2030

This study identified five convergent breakthrough opportunities. Some are in early stages of development, while others are on the cusp of widespread application.



The National Academies and the research committee completed a much anticipated report, [Breakthroughs 2030 report](#). The areas outlined provide a clear rallying point for the food and agriculture research community to focus on areas of greatest impact that will directly affect American farmers in the next 10 years. ARD looks forward to working with the research community to leverage these exciting opportunities in food and agriculture science.

## FVSU . . . From Page 1

Singh said value-added co-products could bring some additional income to rural farmers involved in biomass production.

In addition to helping rural farmers, Singh is training students on FVSU's campus. According to Data USA, he added, only 4.3 percent of underrepresented students are in the nanotechnology workforce.

"There is a national need. I want to develop a capacity in nanotechnology at Fort Valley so that we can move forward with research and produce qualified students who can seek more opportunities in the nanotechnology field," he said.

NIFA supports this [research through the 1890 Capacity Building Grants Program](#). Read the [full article at FVSU News](#).

## Kairo . . . From Page 1

will include, but are not limited to, big data, microbiomes and nanotechnology. These one-time, two-year innovation grants will be awarded to support the development and enhancement of projects, activities, ideas and experiences that will enhance the 1890 multi-state capacity and competitiveness to provide solutions to improve the quality of life of the people we serve.

As you are aware, the House and Senate versions of the 2018 Farm Bills have been passed. The House has selected 47 conferees while the Senate has selected nine conferees. These members will reconcile differences in the two bills. Senator McConnell has announced a Labor Day deadline for a conference report and Sept. 30 deadline to submit the Farm Bill to the president for signature.

At this point, nine of the 10 1890 priorities are in both versions of the farm bill (see July issue of *ARD Updates*).

The 1890 Centers of Excellence were also included in both versions of the farm bill. Briefly, six Centers have been included in the legislation - student success and workforce development; health, wellness and quality of life; farming systems, rural prosperity and economic sustainability; global food security and defense; natural resources, energy and environment, and emerging technologies. A brief description of these Centers are on [the 1890 Universities Foundation website](#). They represent the three mission areas and reflect current and future academic, research and Extension priorities. We are not sure when appropriations will begin, but we need to prepare the 1890 community for implementation. Dr. Mortimer Neufville, CEO and president, of the 1890 Universities Foundation, will lead this effort.

On a related note, on July 31, the Senate passed H.R. 6147, a four-bill FY 2019 minibus appropriations bill. The package was approved 92-6 and provides \$145.1 billion in discretionary and mandatory funding for agriculture, including an increase in total funding for NIFA by \$21.4 million for FY 2019. Included in the NIFA increase is a \$2.185 million increase for Evans-Allen and a \$3 million increase for 1890 Extension.

Consistent with APLU's cross border collaborations, ARD members also had an opportunity to engage in a dialogue with Dr. Victor M. Villalobos, Mexico's incoming Secretary of Agriculture. Briefly, the dialogue focused on student experiential opportunities, university partnerships and joint research projects in such areas as health and security, economic opportunity, access to food and energy and environmental issues.

I look forward to working with the membership in these important areas as we continue to chart a path forward to advance the compelling ARD mission and vision.

# 2019 ARD Research Symposium

## The 1890 Research Agenda: Making Critical Contributions to Rural Prosperity and Challenges in Food and Agriculture

March 31- April 3, 2019 | Hyatt Regency, Jacksonville, FL

### Registration:

**Early registration** begins soon and is **\$500** per participant. Early

**Regular registration**—Nov. 10, 2018-Feb. 24, 2019, **\$525**.

**Late registration**—Feb. 25-March 24, 2019, **\$575**.

**On-site registration**—**\$600**.

[Registration](#) can be paid by purchase order, check or credit card. (an additional fee to cover the bank charges.)

**Hotel Registration**—**Hotel Guest Room Rates:**

Single and Double Occupancy: \$159 |

Triple Occupancy: \$184 | Quadruple Occupancy: \$209

**Tax and Surcharges:** 7% State of Florida Sales Tax; 6% Transient Sales, and 1% City Surcharge (subject to change). Cut off March 8, 2019.

### Abstracts and Posters:

**Deadline for abstracts for posters and oral presentations will be Nov. 21.** Instructions for formatting and electronic submission will be on the symposium website. Also on the website is the evaluation instrument that will be used to judge the competitive poster and oral presentations. The information is helpful in developing the presentation content and should be used to prepare students for their presentations. Abstracts guidelines must be strictly followed and if not followed, the submission will be rejected. For each campus, abstract guideline adherence is the responsibility of the research director or his/her designee.

Judges for posters and oral competitions and session moderators will be needed and each director is asked to submit names and contact information electronically for those willing to serve in these capacities. [Access the form here.](#)

### Morrison-Evans and Mayberry Awards

**The application deadline for the Morrison-Evans Outstanding Scientist Award and the B.D. Mayberry Young Scientist Award is Jan. 18, 2019.** External reviewers, i.e., NIFA national program leaders will evaluate the applications. Access the [application here.](#)

### Special Sessions and Workshop Deadline

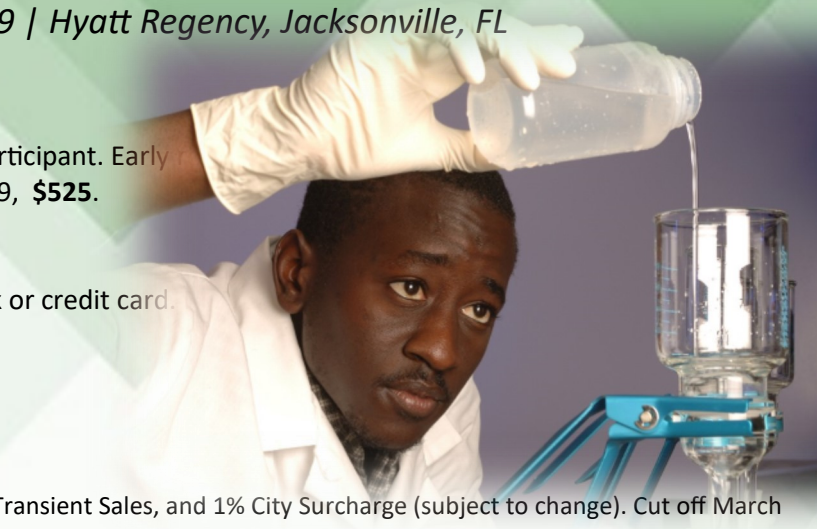
**The application deadline for the Special Sessions and Workshops on selected topics deemed appropriate to the 1890 community is Dec. 7.** Please submit a one-page abstract to Dr. Alton Thompson, ARD executive director, at [athompson1@ncat.edu](mailto:athompson1@ncat.edu). These abstracts must be sufficiently detailed to allow the Symposium Steering Committee to judge the merits of the proposed sessions. A decision will be communicated to you by Dec. 17.

### Displays| Exhibitors

**Each 1890 campus is invited to display a university display at no cost.** Additional exhibits and non-1890 exhibits must pay the **fee of \$2,000 by Feb. 8, 2019.** All exhibitors, including the 1890s, must submit the Exhibit Registration Form by the deadline of Feb. 8. To become an exhibitor, [click here.](#)

To become a sponsor, [click here.](#)

**For additional information contact: [Dr. Alton Thompson](#), (336) 285-2955, [Dr. Orlando McMeans](#), (304) 204-4300 or Dr. [Dyremple Marsh](#), (302) 851-6400.**



## ARD OFFICERS

Moses Kairo  
(Chair)

University of Maryland Eastern Shore  
Email: [mkairo@umes.edu](mailto:mkairo@umes.edu)

Vernon Jones  
(Chair Elect)

Langston University  
Email: [vjones@langston.edu](mailto:vjones@langston.edu)

Andra Johnson  
(Secretary)

Southern University and A&M College  
Email:  
[andrea\\_johnson@suagcenter.com](mailto:andrea_johnson@suagcenter.com)

Conrad K. Bongi (Treasurer)

Tuskegee University  
Email: [cbongi@tuskegee.edu](mailto:cbongi@tuskegee.edu)

Shirley Hymon-Parker  
(Member-at-Large)

N.C. A&T State University  
Email: [shymonp@ncat.edu](mailto:shymonp@ncat.edu)

Govind Kannan  
(Immediate Past-Chair)

Fort Valley State University  
Email: [govindak@fvsu.edu](mailto:govindak@fvsu.edu)

Non-Elected

Alton Thompson  
(Exec. Director)

Email: [athompson1@ncat.edu](mailto:athompson1@ncat.edu)

### 1890 Land Grant Universities

[Alabama A&M University](#)  
[Alcorn State University](#)  
[Central State University](#)  
[Delaware State University](#)  
[Florida A&M University](#)  
[Fort Valley State University](#)  
[Kentucky State University](#)  
[Langston University](#)  
[Lincoln University](#)  
[North Carolina A&T State University](#)  
[Prairie View A&M University](#)  
[South Carolina State University](#)  
[Southern University and A&M College](#)  
[Tennessee State University](#)  
[Tuskegee University](#)  
[University of Arkansas at Pine Bluff](#)  
[University of Maryland Eastern Shore](#)  
[Virginia State University](#)  
[West Virginia State University](#)

ARD Updates is published monthly by the Association of Research Directors. To suggest articles, contact Dr. Alton Thompson at [athompson1@ncat.edu](mailto:athompson1@ncat.edu)

## ARD CALENDAR



# 2018 ESS/AES/ARD Meeting & Workshop



ARD



NCRA



NERA



SAAESD



WAAESD

### ESS-AES-ARD FALL MEETING

Oct. 1-3, Lincoln, NE

The registration is now open for the 2018 Fall ESS/AES/ARD meeting and workshop. The fee is \$500 is registered by Aug.31, then \$550 thereafter. Click for the meeting [registration site and preliminary agenda](#) and here for hotel [information and reservations](#).

A block of rooms has been reserved for Oct. 1-3. The special room rate of \$129/night will be available until Sept. 11 or until the group block is sold out, whichever comes first.

Group Name: Experiment Station Section 2018 | Group Code: EXP

Check in Oct. 1 and check out Oct. 3.

Embassy Suites by Hilton Lincoln, 1040 P St. Lincoln, NE, 68508

Phone Number: 402 473 1111

### APLU 2018 ANNUAL MEETING

New Orleans, LA, Nov. 11-13.

Register today for APLU's 2018 Annual Meeting, the premier gathering of senior leaders from public research universities, land-grant institutions and state university systems. No other meeting in higher education brings together such a diverse array of public university presidents, chancellors and other senior leaders. Join us as we tackle the challenges facing public universities. The theme of this year's Annual Meeting is *Resilience*. The meeting sessions will explore the capacity of universities, their communities and partners to adapt and thrive no matter what stresses or acute shocks they experience. [Click for more information.](#)



ASSOCIATION OF  
PUBLIC &  
LAND-GRANT  
UNIVERSITIES

### NATIONAL GOAT CONFERENCE

Sept. 16-18, Renaissance Montgomery Hotel & Spa

Tuskegee Caprine Research & Education Center

For more information, please contact: [Nar Gurung](#) (334) 727-8457; or [Angela McKenzie](#) (850) 875-8553.

### 76<sup>TH</sup> PROFESSIONAL AGRICULTURAL WORKERS CONFERENCE (PAWC)

December 2-4, 2018

Auburn Marriott Opelika Hotel & Conference Center at Grand National

Registration will be open soon.

[www.pawc.info](http://www.pawc.info)



### 2019 SOUTHERN REGION MINI LAND-GRANT MEETING

March 18-21, 2019 | Coral Springs, FL

Fort Lauderdale Marriott Coral Spring Hotel

The 2019 Southern Region Mini Land-Grant Meeting brings together leaders from seven groups from both 1862 and 1890 land-grant universities to explore avenues for improving the roles of each group and the land-grant functions as a whole.

[Click for more information.](#)