

# **Update on the Agricultural Research Service**

## **for**

### **ESS/SAES/ARD Workshop**

#### **Nashville, Tennessee**

#### **September 29, 2010**

---

**Edward B. Knipling**  
Administrator

United States  
Department of  
Agriculture

1400 Independence Avenue, SW  
Room 302-A  
Jamie L. Whitten Federal Building  
Washington, DC 20250

Agricultural  
Research  
Service

202-720-3656 (voice)  
202-720-5427 (fax)  
[edward.knipling@ars.usda.gov](mailto:edward.knipling@ars.usda.gov)



# ARS Profile

(<http://www.ars.usda.gov>)

---

- Intramural scientific research agency of USDA
- Farm-to-table research scope
- Information and technology transfer
- Administration and stakeholder priority setting process
- National Research Programs
- 1,000+ projects
- 2,500+ scientists and post docs
- 6,500+ other employees
- 100+ laboratories; 5 overseas laboratories
- \$1.2 billion annual budget
- Partnerships with other agencies, universities, and industry
- International collaborations



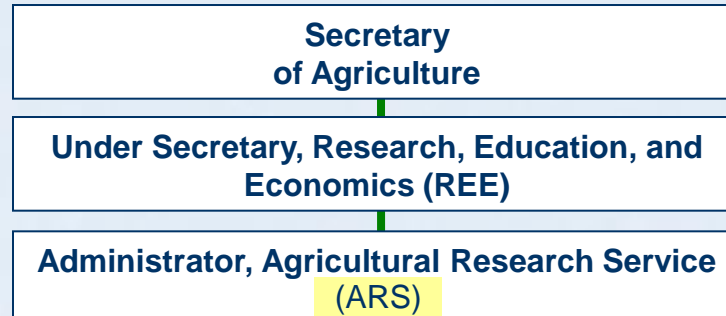
# ARS Locations



- ⊛ Area
- \* Research Centers
- ▣ Human Nutrition Centers
- Research Locations
- Research Worksites



# ARS Organization: Matrix Line and Staff



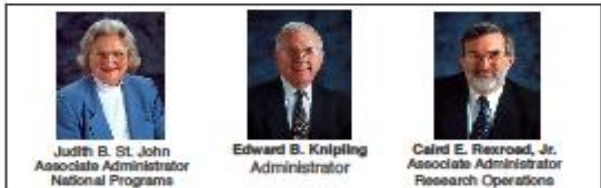
## Program Planning, Coordination, and Support

- Office of National Programs
- Office of International Research Programs
- Administrative & Financial Management
- Chief Information Officer
- Office of Diversity, Outreach, and Equal Opportunity
- ARS Homeland Security
- Office of Technology Transfer
- Budget & Program Management
- Information & Public Affairs
- Office of Scientific Quality Review

## Research and Information Delivery

- Beltsville Area
- Mid South Area
- Midwest Area
- North Atlantic Area
- Northern Plains Area
- Pacific West Area
- South Atlantic Area
- Southern Plains Area
- National Agricultural Library

ARS LABORATORIES



**Administrator's Council  
Agricultural Research Service**

**Office of National Programs**

**Area and NAL  
Directors**



**Steven M. Kappes**  
Deputy Administrator,  
National Program Staff  
Animal Production & Protection



**Steven R. Shaffer**  
Deputy Administrator,  
National Program Staff  
Natural Resources & Sustainable  
Agricultural Systems



**Wilbert H. Blackburn**  
Director,  
Northern Plains Area



**Deborah Brennan**  
Director,  
South Atlantic Area



**Dan R. Upchurch**  
Director,  
Southern Plains Area



**Sally M. Schneider**  
Acting Deputy Administrator,  
National Program Staff  
Crop Production & Protection



**Molly Kretsch**  
Deputy Administrator,  
National Program Staff  
Nutrition, Food Safety & Quality



**Larry Chandler**  
Director,  
Midwest Area



**Joseph T. Spence**  
Director,  
Beltville Area



**Andy Hammond**  
Director,  
Pacific West Area



**Edgar G. King, Jr.**  
Director,  
Mid South Area



**Darluz Swietlik**  
Director,  
North Atlantic Area



**Simon Liu**  
Director,  
National Agricultural Library

# ARS Program Scope and Capacities (Disciplines, Funding, and Infrastructure)

---

**Natural  
Resources and  
Sustainable  
Agricultural  
Systems**

**(~20%)**

**Crop  
Production and  
Protection**

**(~40%)**

**Animal  
Production and  
Protection**

**(~15%)**

**Nutrition,  
Food Safety  
and Quality**

**(~25%)**



# USDA Research Priorities & Targeted Outcomes

---

- Climate Change
- Bioenergy/Biofuels
- Human Nutrition/Obesity Prevention/  
Children's Health
- Food Safety
- Global Food Security



# ARS Budget Status and Outlook

---

	<u>(\$000s)</u>	<u>Net Change (\$Ms)</u>
FY 2010 Appropriation ( <i>current</i> )	1,179,693	--
FY 2011 President's Budget	1,199,669	+20
FY 2011 Senate	1,216,815	+37
FY 2011 House	~1,190,000	+10
FY 2011 Conference/Appropriation ( <i>Anticipate Continuing Resolution</i> )	?	?
FY2012 President's Budget	?	?





# Some Program Initiatives

---

- Genetic Resources
- Biomass/Bioenergy Centers
- Global Research Alliance on Agricultural Greenhouse Gases
- President's Task Force on Childhood Obesity
- Feed the Future/Borlaug Research Initiative
- Agriculture Technology Innovation Partnerships (ATIP)



# Some Management Initiatives

---

- Extramural Agreements Management
- Capital Investment Strategy
- Cultural Transformation



*ARS Values and  
Appreciates our  
SAES and ARD  
Partnerships  
THANKS!*